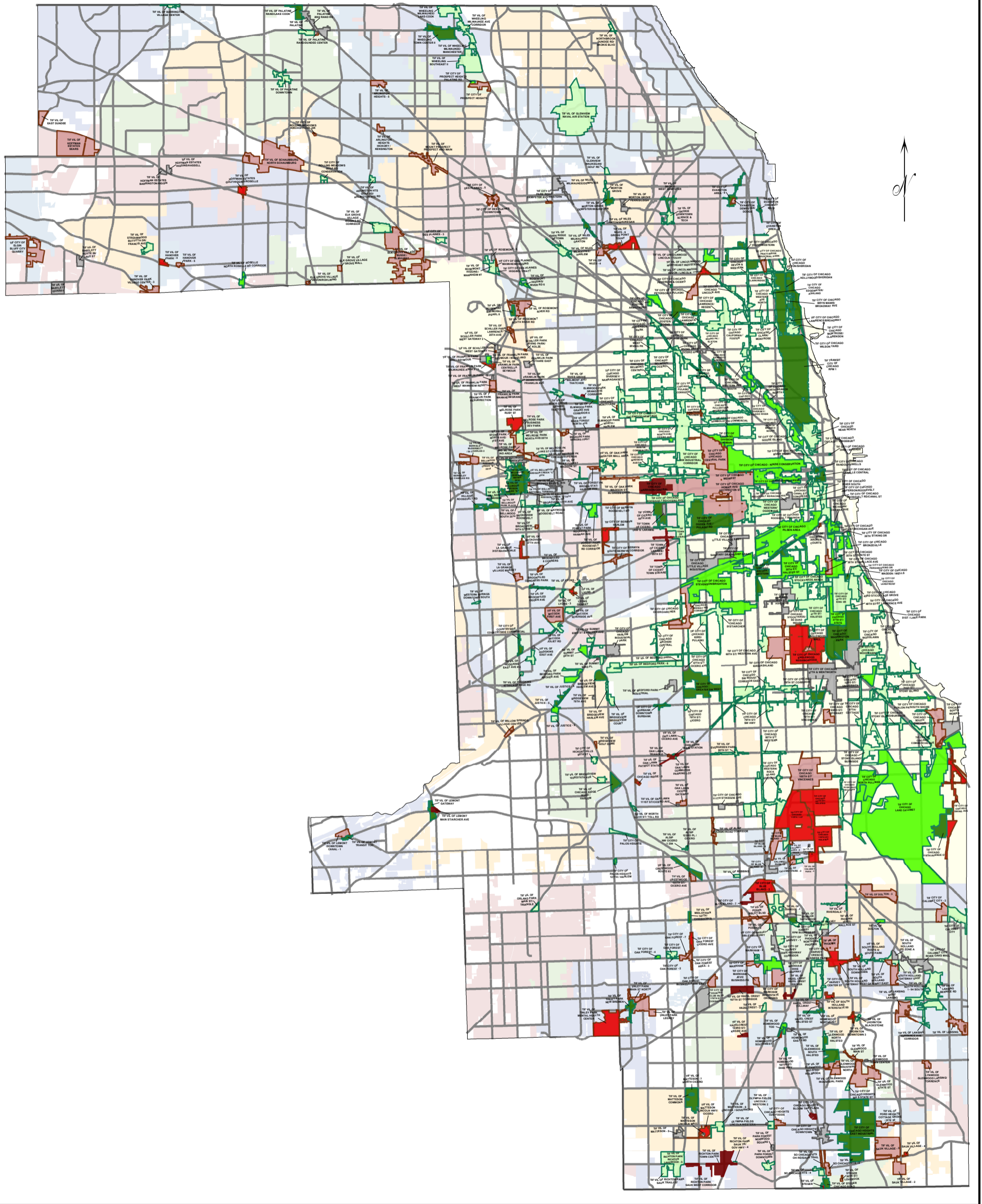


Percent Change in Tax Revenue for Cook County Tax Increment Financing from Tax Year 2017 to Tax Year 2018



Karen A. Yarbrough
Cook County Clerk



Municipality	Road
TIF by Percent Change in Tax Revenue from 2017 to 2018	
Down 50% or more	No Change
Down 25% to 50%	Up 0% to 25%
Down 0% to 25%	Up 25% to 50%
	Up 50% or more

This Map represents tax year 2018 TIFs. Former and future TIFs are not shown.

This map was created by the Cook County Clerk Map Dept 4th Floor 118 N Clark St. Chicago, IL 60602
www.cookcountyclerk.com
©2019 Cook County, Illinois
All Rights Reserved