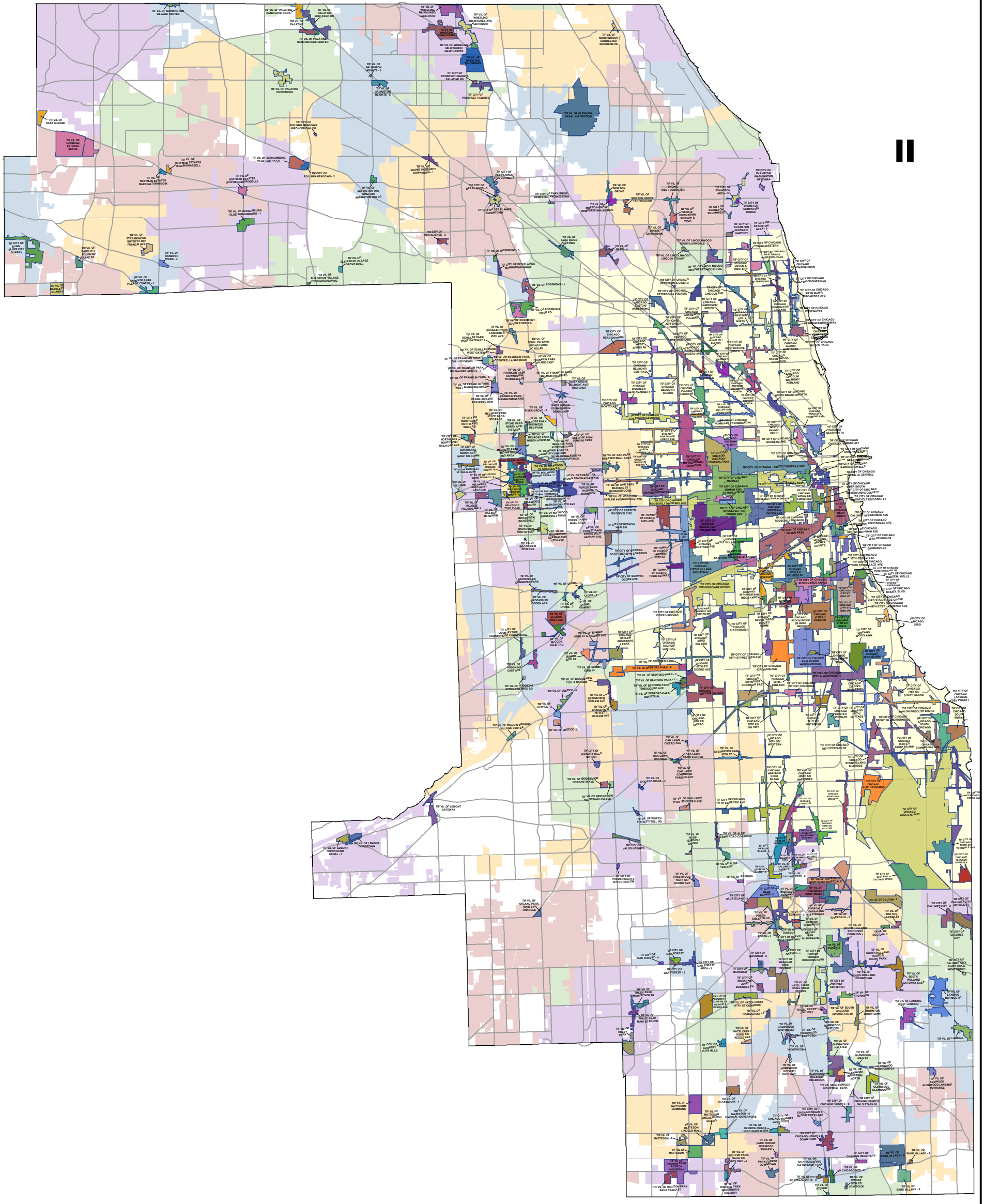
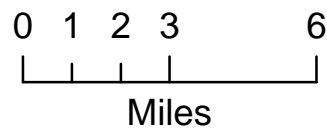


Cook County Tax Increment Financing Districts for Tax Year 2012



David Orr
Cook County Clerk



LEGEND

- Municipality
- TIF
- Road



This map represents tax year 2012 TIFs only
Former and future TIFs are not shown

This map was created using Cook County
GIS Data by the Cook County Clerk Map Dept
4th Floor 118 N Clark St. Chicago, IL 60602
www.cookctyclerk.com

©2013 Cook County, Illinois; All Rights Reserved