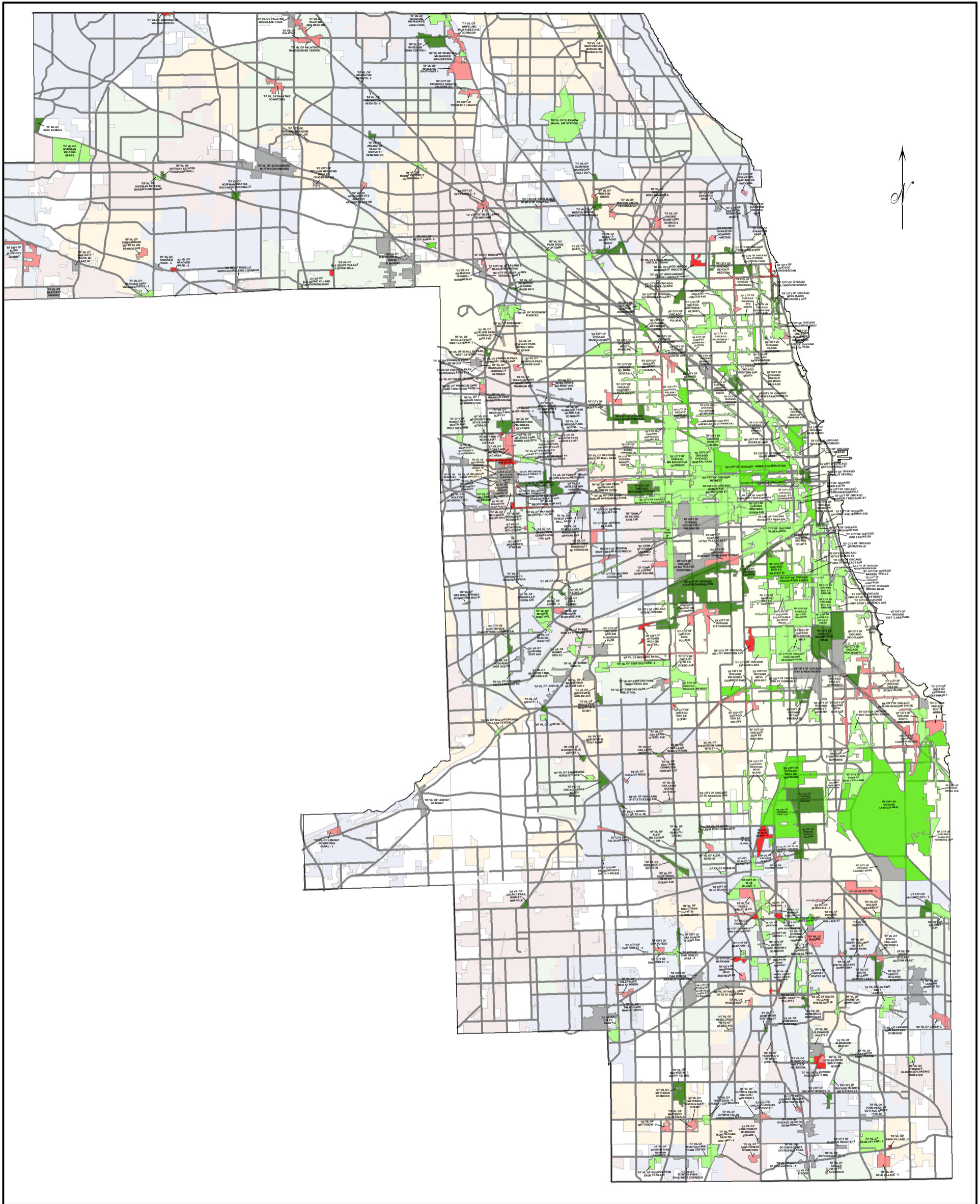
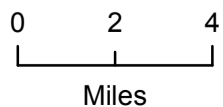


Percent Change in Tax Revenue for Cook County Tax Increment Financing Districts from Tax Year 2014 to Tax Year 2015



David Orr
Cook County Clerk



Municipality		Road	
[Light Green Box]	Municipality	[Grey Line]	Road
TIF by Percent Change in Tax Revenue from 2014 to 2015			
[Dark Red Box]	Down 50% or more	[Grey Box]	No Change
[Orange Box]	Down 25% to 50%	[Light Green Box]	Up 0% to 25%
[Light Red Box]	Down 0% to 25%	[Medium Green Box]	Up 25% to 50%
		[Dark Green Box]	Up 50% or more

This Map represents tax year 2015 TIFs. Former and future TIFs are not shown.

This map was created by the Cook County Clerk Map Dept 4th Floor 118 N Clark St. Chicago, IL 60602
www.cookcountyclerk.com
©2016 Cook County, Illinois
All Rights Reserved