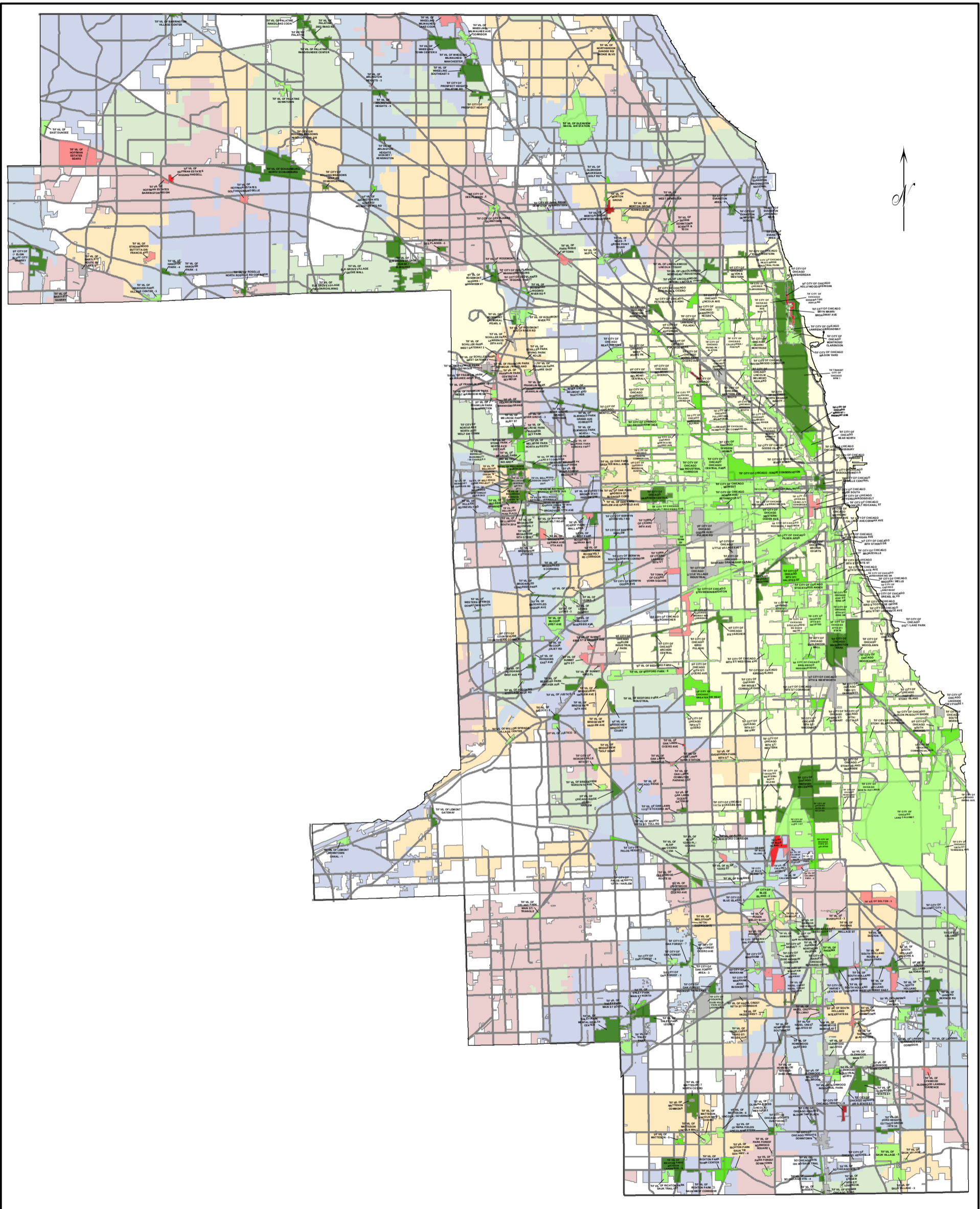


Percent Change in Tax Revenue for Cook County Tax Increment Financing Districts from Tax Year 2015 to Tax Year 2016



David Orr
Cook County Clerk



Municipality	Road
TIF by Percent Change in Tax Revenue from 2015 to 2016	
Down 50% or more	No Change
Down 25% to 50%	Up 0% to 25%
Down 0% to 25%	Up 25% to 50%
	Up 50% or more

This Map represents tax year 2016 TIFs. Former and future TIFs are not shown.

This map was created by the Cook County Clerk Map Dept 4th Floor 118 N Clark St. Chicago, IL 60602 www.cookcountyclerk.com ©2017 Cook County, Illinois All Rights Reserved