

**POST-ELECTION
REPORT**

2016



**11.08.16
Presidential Election**

David Orr
Cook County Clerk
cookcountyclerk.com



Facebook
clerkorr



Youtube
cookcountyclerk1



Twitter
@cookcountyclerk



Instagram
@cookcountyclerk

Suburban Cook County Post-Election Report

November 8, 2016 Presidential Election

Table of Contents

Letter from David Orr	1	Summary Report	25-66
Historical Turnout — Record Number of Ballots Cast	2	• Ballots Cast	25
Map: Turnout of Registered Voters by Precinct	3	• Proposed Amendment to the Illinois Constitution	25
Voter Turnout by Township	4	• President and Vice President	25
Record Number of Registered Voters in Suburban Cook County	5-6	• U.S. Senator	25
Map: Ballots Cast for President	7	• State of Illinois Comptroller	25
Clinton Wins 88% of Suburban Cook County Precincts	8	• U.S. Representative	26-27
Clinton Wins Highest Number of Votes in Modern Suburban Cook County History	9	• State Senator	27-30
Votes Cast for President	10-11	• State Representative	30-37
Partisan Percentage of Vote for President	12-13	• Water Reclamation Commissioner	37
Schneider Takes Back 10th Congressional District	14	• State’s Attorney	38
Busiest and Slowest Precincts	15	• Clerk of the Circuit Court	38
Pre-Election Day Voting Breaks Records Mail Ballot Voting Sees 139% Increase	16	• Recorder of Deeds	38
Map: Total Pre-Election Ballots Cast	17	• Circuit Court Judge	38-40
Election Day Registration Overwhelmingly Popular with Younger Voters	18	• Subcircuit Court Judge	40-42
Map: Election Day Registrations	19	• LaGrange Highlands Sanitary District Trustee	43
Students Key to a Smooth Election Day	20	• South Lyons Township Sanitary District Trustee	43
I Vote Because... Social Media Campaign	21	• South Palos Township Sanitary District Trustee	43
An Online Presence in the Presidential Election	22-23	• Superintendent of Schools (Kane County)	43
Snapshots from Election Day	24	• Retention Judges	43-51
		• Referenda	51-63
		• Qualified Write-ins	64
		• Write-in Candidates	65-66



Dear Friends:

It's hard to believe that 10 years have passed since Early Voting took effect in Illinois, and each election cycle it's refreshing to see constant increases in suburban Cook County residents taking advantage of Pre-Election Day voting in all its forms. This year's Presidential Election was no exception.

Pre-Election Day voting, including Early Voting, Mail Voting, and Grace Period Registration and voting accounted for 42.5 percent of all ballots cast, an increase of 55.7 percent from the November 2012 Presidential Election.

In particular, Early Voting reached historic levels with 360,383 early votes cast – a 57.6 percent increase from the 2012 Presidential Election.

This 2016 Presidential Post-Election Report takes a comprehensive look at the voting totals, trends and statistics during the November General Election throughout suburban Cook County. Below is a snapshot of additional standout General Election data:

- Hillary Clinton received the highest number of votes – 699,003 – by a presidential candidate in modern suburban Cook County history. She surpassed Barack Obama's 2008 record by 845 votes.
- Donald Trump received the lowest number of votes – 317,970 – by a Republican or Democratic Presidential Candidate in modern suburban Cook County history.
- Oak Park Township had the highest voter turnout at 83.4 percent. Oak Park has had an 80 percent turnout in every Presidential Election since 2000.
- Brad Schneider reclaimed the 10th Congressional District seat from incumbent Bruce Dold. The two have each won the seat twice since 2010 – yet neither has won a re-election bid in the three contests between the two candidates. Of the three contests, 2016 was the largest margin of victory:

2016: Schneider won by 4,737 votes (7%)

2014: Dold won by 241 votes (0.6%)

2012: Schneider won by 1,220 votes (2%)

I hope this 2016 Presidential Post-Election Report, and the great work my staff has put into it, is useful to you.

Sincerely,

David Orr
Cook County Clerk

Historical Turnout — Record Number of Ballots Cast

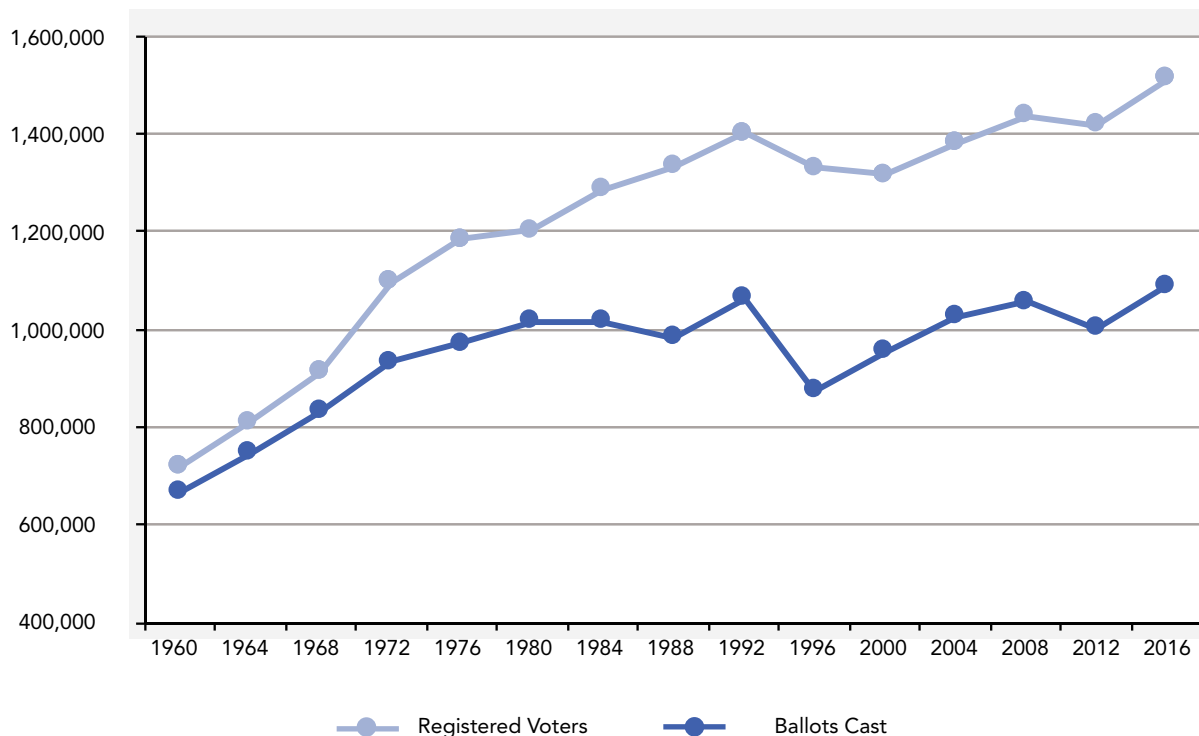
Though the turnout rate for the Nov. 8, 2016 Presidential Election – 72 percent – was about average for Presidential Elections since 1980, the number of ballots cast – 1,089,840 – was an all-time record in suburban Cook County.

The turnout percentage does not necessarily reflect a lack of voter participation, as there were more registered voters in suburban Cook County than ever for this year’s Presidential Election. Additionally, the number of ballots cast in the Presidential Election were about 2.3 times as many as were cast in the March 15, 2016 Presidential Primary.

Presidential Election Turnout: 1992-2016

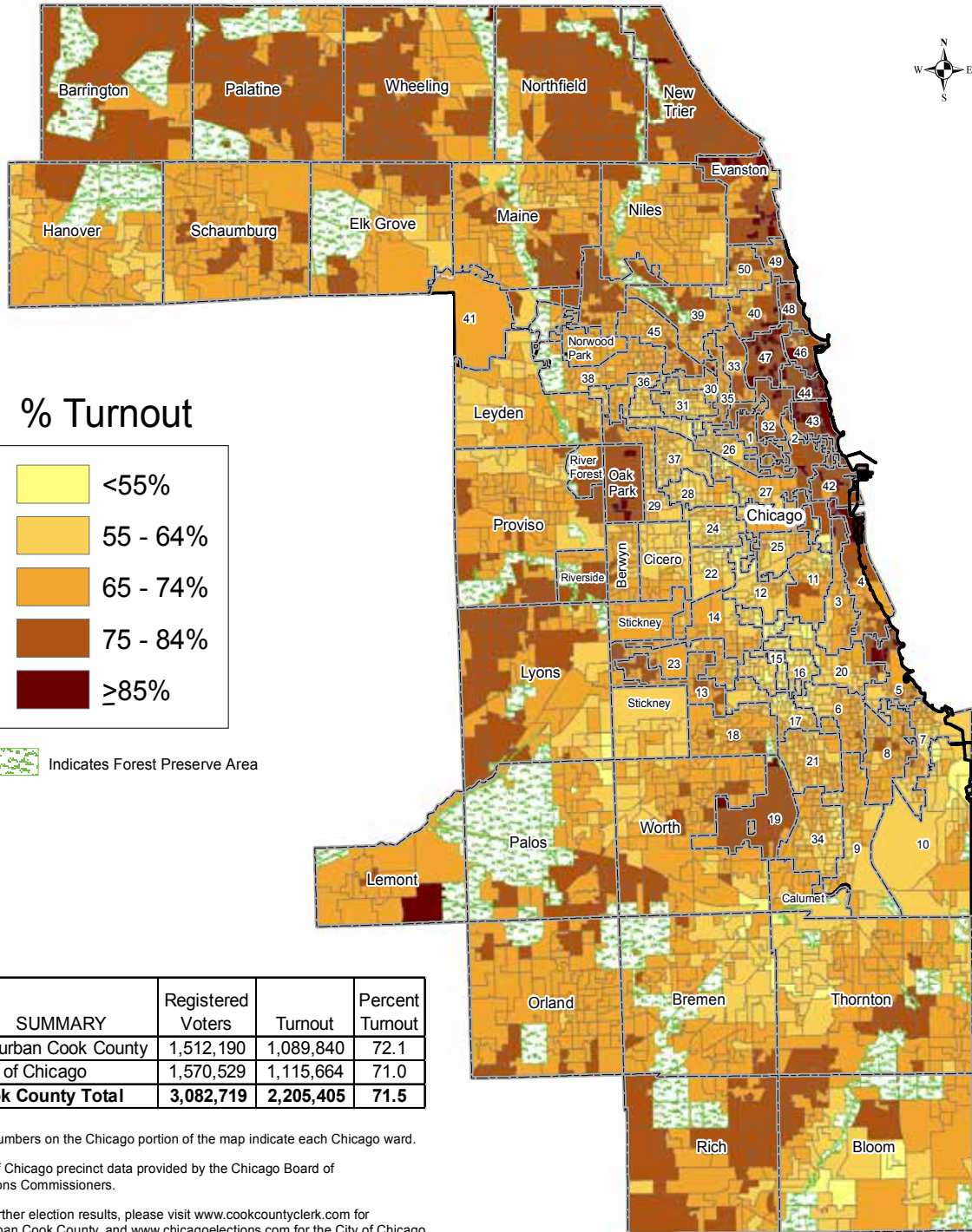
YEAR	REGISTERED VOTERS	BALLOTS CAST	TURNOUT
1992	1,400,550	1,062,603	76%
1996	1,328,808	872,447	66%
2000	1,315,350	954,769	73%
2004	1,378,159	1,024,867	74%
2008	1,436,210	1,056,242	74%
2012	1,416,811	1,001,693	71%
2016	1,512,190	1,089,840	72%

Registered Voters, Ballots Cast in Presidential Elections



Turnout of Registered Voters by Precinct

November 8, 2016 Presidential General Election
Cook County, Illinois



The numbers on the Chicago portion of the map indicate each Chicago ward.
City of Chicago precinct data provided by the Chicago Board of Elections Commissioners.
For further election results, please visit www.cookcountyclerk.com for suburban Cook County, and www.chicagoelections.com for the City of Chicago.

David Orr
Cook County Clerk



Voter Turnout by Township – Highest to Lowest

Suburban Cook County

For the third Presidential General Election in a row, Oak Park Township had the highest voter turnout in suburban Cook County. Oak Park has reached a turnout of 80 percent or more in every Presidential Election since 2000. Evanston Township saw its highest turnout in the last decade and Cicero matched its highest turnout from the November 2000 election.

TOWNSHIP	NOV. 8, 2016			HISTORICAL PRESIDENTIAL ELECTION TURNOUT				
	REGISTERED VOTERS	BALLOTS CAST	TURNOUT	2012	2008	2004	2000	1996
Oak Park	37,180	31,004	83.4%	82%	83%	81%	81%	72%
Evanston	48,765	39,229	80.4%	78%	76%	77%	78%	68%
New Trier	41,577	33,226	79.9%	79%	82%	84%	85%	78%
River Forest	8,002	6,330	79.1%	79%	82%	84%	83%	74%
Northfield	61,155	47,279	77.3%	75%	78%	80%	80%	73%
Barrington	11,386	8,748	76.8%	76%	78%	80%	80%	71%
Riverside	11,114	8,528	76.7%	75%	77%	80%	78%	69%
Wheeling	92,738	69,972	75.5%	74%	77%	79%	77%	70%
Palatine	66,786	50,226	75.2%	74%	77%	78%	75%	69%
Rich	53,150	39,747	74.8%	78%	79%	77%	75%	68%
Lemont	15,107	11,134	73.7%	73%	77%	78%	75%	69%
Lyons	67,056	48,906	72.9%	71%	75%	76%	73%	68%
Elk Grove	48,776	35,497	72.8%	72%	75%	76%	75%	67%
Proviso	91,702	66,307	72.3%	73%	74%	72%	69%	61%
Maine	81,715	59,074	72.3%	69%	72%	75%	74%	68%
Orland	69,263	49,840	72.0%	70%	74%	76%	73%	68%
Schaumburg	75,648	54,233	71.7%	70%	73%	74%	71%	64%
Palos	34,635	24,501	70.7%	69%	73%	75%	73%	66%
Niles	68,838	48,698	70.7%	67%	71%	75%	76%	69%
Norwood Park	16,251	11,383	70.0%	63%	69%	71%	72%	67%
Worth	92,877	64,649	69.6%	68%	78%	74%	71%	65%
Berwyn	28,079	19,315	68.8%	63%	67%	69%	68%	62%
Bremen	68,961	47,082	68.3%	68%	71%	71%	68%	60%
Thornton	105,467	71,664	67.9%	71%	71%	71%	68%	59%
Hanover	49,871	33,885	67.9%	66%	71%	70%	67%	62%
Bloom	54,537	36,734	67.4%	69%	71%	69%	68%	62%
Calumet	11,599	7,770	67.0%	70%	70%	70%	64%	55%
Leyden	47,880	31,857	66.5%	63%	68%	69%	66%	63%
Stickney	21,104	13,624	64.6%	58%	64%	68%	65%	59%
Cicero	30,971	19,398	62.6%	55%	60%	60%	62%	62%
Suburban Cook	1,512,190	1,089,840	72.1%	71%	74%	74%	73%	66%

Record Number of Registered Voters in Suburban Cook County

The 2016 Presidential Election saw a record number of registered voters in suburban Cook County. The 1,512,190 registered voters for the Nov. 8 election reflects a 4.8 percent increase over the 1,443,261 voters registered during the Presidential Primary, and 5.3 percent more than were registered for the 2008 Presidential Election. Until now, the highest number of registered voters for a Presidential Election.

This comes as the Clerk’s office continues its efforts to clean the rolls of ineligible voters. One method we use to clear voters who have moved is by working with the US Postal Service’s National Change of Address (NCOA) registry. We were disappointed Gov. Bruce Rauner vetoed the state legislature’s Automatic Voter Registration (AVR) bill, which was passed last spring. AVR would not only make it easier for eligible voters to be registered, but would modernize and streamline the voter registration process.

Registered Voters in Suburban Cook County

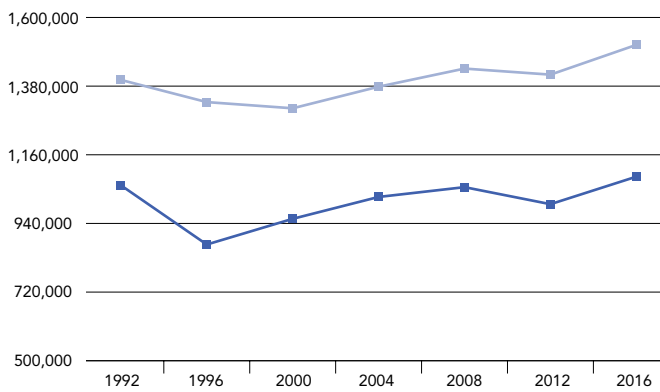
ELECTION	TURNOUT
2016 Presidential General	72.1%
2016 Presidential Primary	48.6%
2014 Gubernatorial General	49.8%
2014 Gubernatorial Primary	16.0%
2012 Presidential General	70.7%
2012 Presidential Primary	23.6%
2010 Gubernatorial General	52.5%
2010 Gubernatorial Primary	25.5%
2008 Presidential General	73.5%
2008 Presidential Primary	43.3%
2006 Gubernatorial General	49.7%
2006 Gubernatorial Primary	25.0%
2004 Presidential General	74.3%
2004 Presidential Primary	31.3%
2002 Gubernatorial General	51.1%
2002 Gubernatorial Primary	33.4%
2000 Presidential General	72.9%
2000 Presidential Primary	23.1%
1998 Gubernatorial General	53.9%
1998 Gubernatorial Primary	23.9%
1996 Presidential General	65.7%
1996 Presidential Primary	25.5%
1994 Gubernatorial General	49.7%
1994 Gubernatorial Primary	28.0%
1992 Presidential General	75.9%
1992 Presidential Primary	40.2%

Registered Voters, Ballots Cast in Elections

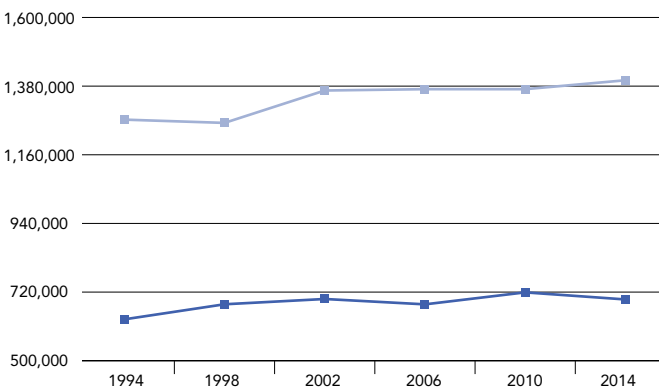
Registered Voters in Suburban Cook County

Registered Voters Ballots Cast

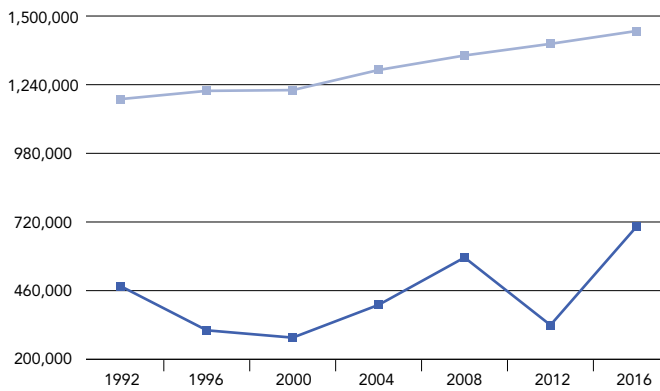
PRESIDENTIAL GENERAL



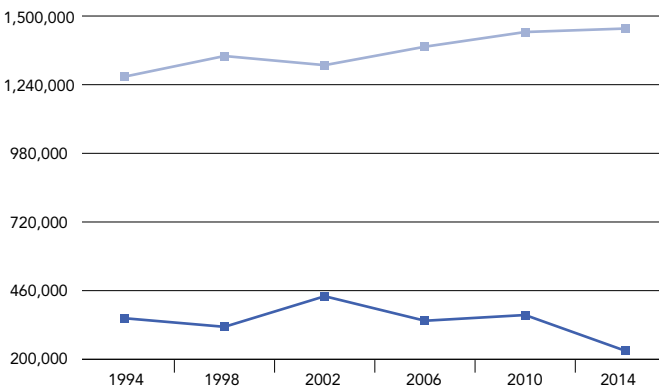
GUBERNATIONAL GENERAL



PRESIDENTIAL PRIMARY

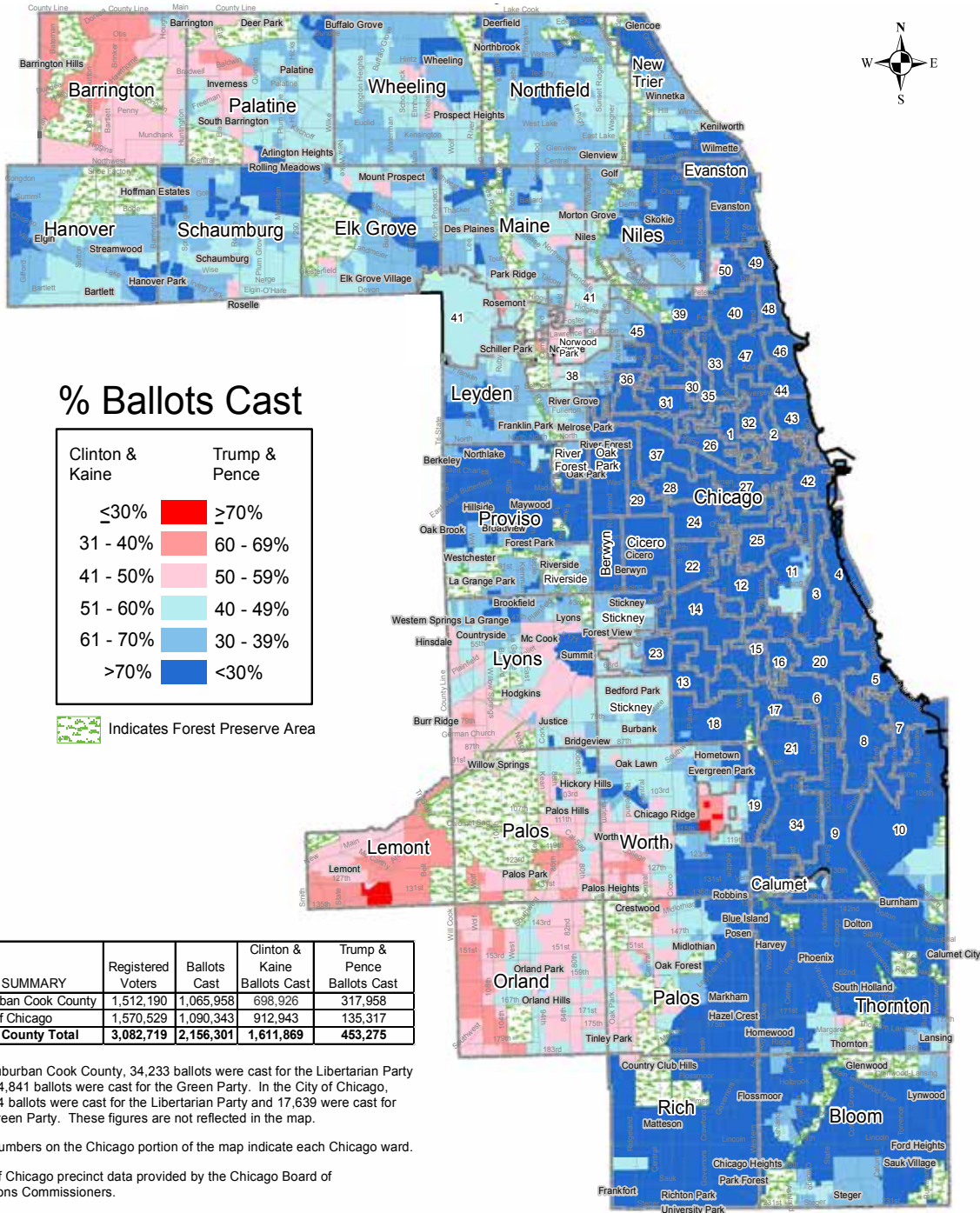


GUBERNATIONAL PRIMARY



Ballots Cast For President

November 8, 2016 Presidential General Election
Cook County, Illinois



* In suburban Cook County, 34,233 ballots were cast for the Libertarian Party and 14,841 ballots were cast for the Green Party. In the City of Chicago, 24,444 ballots were cast for the Libertarian Party and 17,639 were cast for the Green Party. These figures are not reflected in the map.

The numbers on the Chicago portion of the map indicate each Chicago ward.

City of Chicago precinct data provided by the Chicago Board of Elections Commissioners.

For further election results, please visit www.cookcountyclerk.com for suburban Cook County, and www.chicagoelections.com for the City of Chicago.

David Orr
Cook County Clerk



Clinton Wins 88% of Suburban Cook County Precincts

The percentage of suburban Cook County precincts Hillary Clinton won in the Nov. 8, 2016 Presidential Election was nearly as high as the percentage then-U.S. Senator Barack Obama won in 2008.

Clinton got more votes than Donald Trump in 88 percent – or 1,407 – of all 1,599 suburban Cook County precincts. In 2012, President Obama won 79 percent (1,323 of 1,673) of suburban Cook County’s precincts. In 2008 then-candidate Obama won 89 percent of precincts.

In 110 precincts, Trump got 20 or fewer votes – in 41 of those precincts he got 10 or less votes. In Bremen Township Precinct 23, Trump got just one vote (to 253 for Clinton).

In some precincts Trump got fewer votes than Green Party candidate Jill Stein or Libertarian Party candidate Gary Johnson. In Evanston Ward 7, Precinct 6, Johnson got 9 votes to Trump’s 5. In Thornton 29 it was Johnson-6, Stein-5, Trump-5. In Proviso 31 Stein got 8 votes to Trump’s 6.

The lowest number of votes Clinton received in any one precinct came in Riverside Precinct 2, where she received 48 votes – still greater than the 37 votes in that precinct for Trump. Clinton got fewer than 100 votes in six suburban Cook County precincts.

Clinton had some substantial margins of victory in suburban Cook County. In Rich Township’s 1st Precinct, Clinton had 2,034 votes to Trump’s 63 votes – a difference of 1,971 votes. Trump’s largest margin of victory in any precinct was 294 votes (623 – 329) in Lemont Precinct 13.

Clinton’s “Home” township and precinct came out for her. Clinton grew up in northwest suburban Park Ridge, and her childhood home is in Maine Township Precinct 30. Besides garnering 57.9 percent of the votes cast for president in Maine Township, Clinton collected 843 of the 1,472 votes cast for president in Maine 30. In her “home” precinct, Clinton got 57.3 percent of the vote, compared to 37.4 percent for Trump.

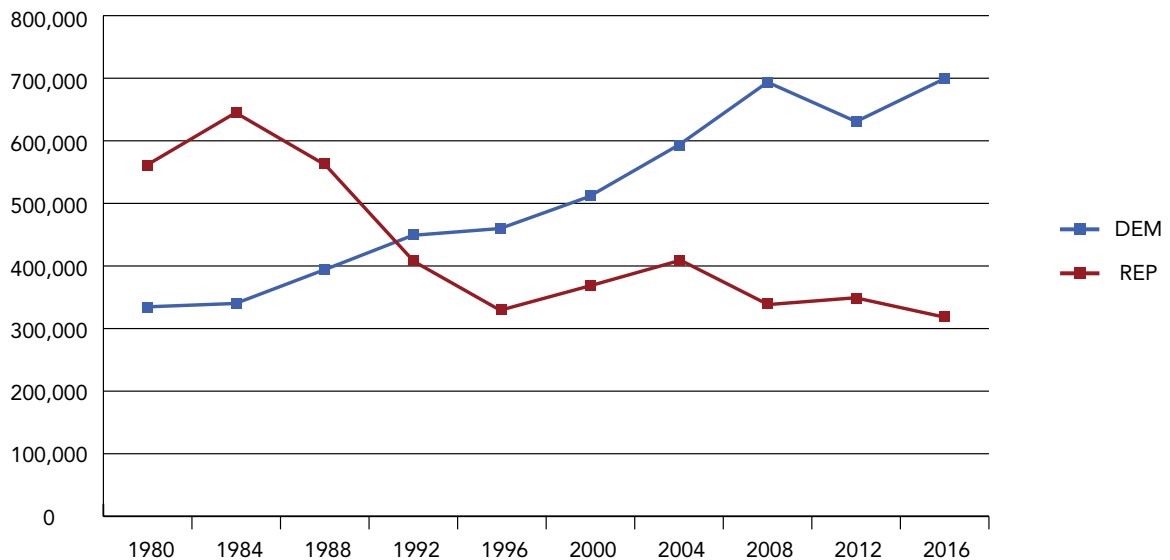
Greatest Precinct Vote Differences Between Clinton & Trump

TOWNSHIP & PRECINCT	CLINTON	TRUMP	DIFFERENCE
Rich-1	2,034	63	1,971
Rich-36	1,255	83	1,172
Bloom-38	1,243	124	1,119
Evanston-2-1	1,211	104	1,107
Oak Park-31	1,088	114	974

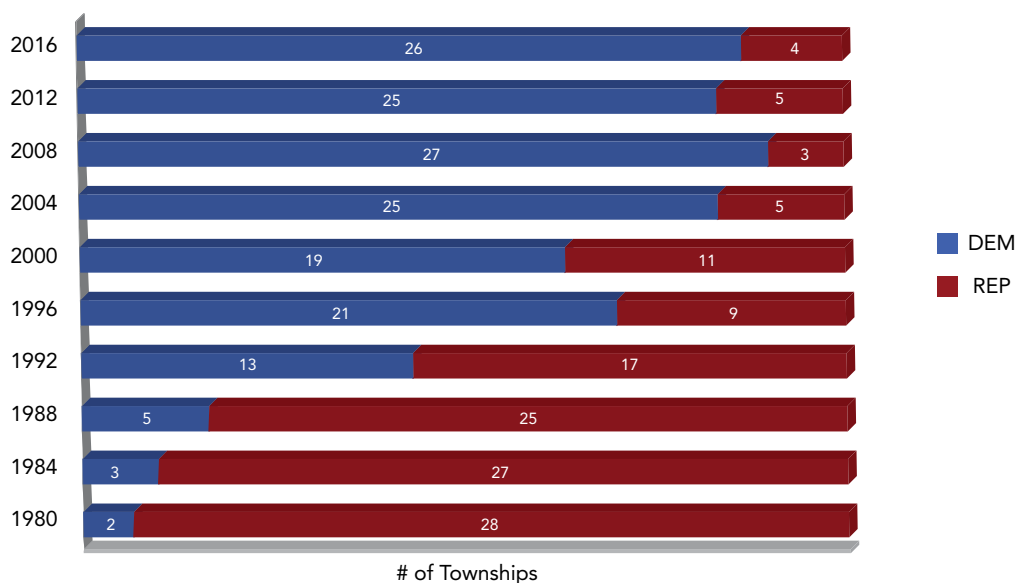
Clinton Wins Highest Number of Votes in Modern Suburban Cook County History

Hillary Clinton received the highest number of votes – 699,003 – by a presidential candidate in modern suburban Cook County history.* The previous record was held by Barack Obama, who garnered just 845 fewer votes in 2008. While Donald Trump received 317,970 votes – the lowest number by a Republican or Democratic Presidential Candidate – he won more townships (4) than John McCain in the 2008 Presidential Election.

Ballots Cast by Party for President: 1980-2012



Presidential Results by Township: 1980-2016



*There are 30 suburban Cook County townships

Votes Cast for President

Suburban Cook County 1988-2016

Township	1988		1992		1996		2000	
	Dukakis	Bush	Clinton	Bush	Clinton	Dole	Gore	Bush
Barrington	1,204	4,513	1,501	3,989	1,719	3,691	1,945	4,529
Berwyn	8,547	11,646	8,628	7,531	8,122	5,318	8,540	5,552
Bloom	15,789	19,015	19,562	13,185	20,687	10,956	21,369	11,484
Bremen	17,941	20,778	22,390	14,339	22,745	11,386	25,521	13,576
Calumet	3,850	2,188	5,039	1,305	4,651	830	5,048	838
Cicero	7,147	12,705	7,562	7,696	8,074	5,408	8,928	5,341
Elk Grove	10,578	22,783	12,379	16,894	12,518	13,531	14,357	15,407
Evanston	22,629	10,913	25,731	8,088	21,963	6,729	24,444	6,611
Hanover	5,684	10,863	7,772	9,041	8,564	7,871	10,395	10,695
Lemont	1,527	2,580	1,769	2,308	2,330	2,701	2,812	4,213
Leyden	13,923	22,368	14,868	15,181	15,244	10,920	14,818	12,217
Lyons	17,318	27,564	18,328	19,682	18,755	17,379	19,444	19,545
Maine	21,576	36,733	23,397	25,960	23,623	21,150	24,729	23,196
New Trier	13,521	19,115	15,200	14,567	14,537	13,845	16,143	14,207
Niles	26,419	22,186	27,755	14,964	25,962	11,746	27,591	12,784
Northfield	14,470	25,835	17,004	19,508	17,321	16,632	20,562	17,914
Norwood Park	4,727	7,630	4,834	5,117	5,331	3,955	5,204	4,486
Oak Park	15,279	10,489	17,472	7,157	15,869	5,701	18,009	5,783
Orland	7,097	17,472	10,399	15,931	13,287	15,225	16,725	20,616
Palatine	10,899	28,849	13,432	22,573	14,167	18,711	16,397	22,826
Palos	7,189	15,266	8,083	11,448	8,862	10,187	9,701	11,543
Proviso	30,925	29,302	35,932	20,678	33,669	15,083	38,817	16,080
Rich	11,675	13,258	15,650	9,389	17,665	7,441	21,657	7,463
River Forest	2,059	4,084	2,246	3,060	2,347	2,718	2,690	3,010
Riverside	2,995	5,491	3,002	3,945	3,033	3,385	3,513	3,747
Schaumburg	13,915	29,945	17,897	22,681	18,152	17,008	20,453	21,014
Stickney	6,725	8,651	7,023	5,344	6,992	3,747	6,801	4,729
Thornton	32,785	34,029	41,103	21,745	41,108	15,456	47,136	14,772
Wheeling	20,728	42,325	24,834	32,099	26,130	26,120	28,172	29,549
Worth	23,069	42,504	25,239	29,752	27,108	23,425	28,761	25,881
% of Suburban Vote	41%	58%	44%	39%	54%	38%	56%	41%
Suburban Totals*	392,190	561,080	456,031	405,157	460,535	328,255	510,682	369,608

Votes Cast for President– continued

2004		2008		2012		2016		Township
Kerry	Bush	Obama	McCain	Obama	Romney	Clinton	Trump	
2,480	4,886	3,319	4,368	2,863	4,954	3,805	4,159	Barrington
10,062	5,559	12,670	4,081	11,591	3,502	14,612	3,502	Berwyn
24,642	11,978	30,049	8,772	28,050	7,917	28,177	6,874	Bloom
28,557	16,358	34,451	13,467	31,410	13,306	30,276	14,181	Bremen
6,060	957	7,215	627	7,186	490	6,972	495	Calumet
9,772	5,119	12,385	3,116	12,339	2,510	16,018	2,264	Cicero
16,593	16,227	19,727	13,666	17,455	14,166	19,447	13,344	Elk Grove
29,142	6,245	31,046	4,158	29,177	4,580	34,038	2,808	Evanston
13,219	12,910	18,627	10,698	17,137	11,564	19,905	11,634	Hanover
3,541	5,523	4,313	5,569	3,699	6,188	4,024	6,292	Lemont
15,894	13,505	17,911	11,192	16,389	10,467	18,335	11,535	Leyden
23,480	21,621	26,906	18,685	23,535	19,611	26,982	17,867	Lyons
28,746	24,926	31,638	21,338	28,622	22,185	33,424	21,519	Maine
18,120	13,877	20,469	11,594	17,119	14,046	21,789	7,953	New Trier
28,826	16,080	30,150	14,169	27,487	14,203	32,816	13,007	Niles
22,826	20,546	26,578	17,602	22,570	19,806	28,692	14,673	Northfield
5,574	4,807	5,827	4,467	4,946	4,350	5,470	5,124	Norwood Park
21,751	5,782	24,580	4,271	23,247	4,405	26,015	2,878	Oak Park
19,956	26,189	23,445	24,242	19,633	25,523	21,711	24,841	Orland
20,135	24,787	25,868	20,887	22,133	22,460	26,372	19,200	Palatine
11,251	12,500	12,004	11,560	10,459	11,697	11,021	11,802	Palos
44,374	17,404	52,327	13,493	49,078	12,749	50,684	11,944	Proviso
27,022	8,040	34,599	5,554	33,909	5,086	34,073	4,235	Rich
3,329	2,663	4,005	2,105	3,606	2,303	4,282	1,429	River Forest
4,250	3,736	4,686	3,155	4,210	3,279	5,000	2,721	Riverside
25,259	23,339	32,006	18,405	28,356	19,651	31,436	18,768	Schaumburg
7,204	5,316	7,529	4,490	6,846	4,102	7,790	5,033	Stickney
56,831	15,114	67,990	9,765	64,492	8,314	61,419	7,621	Thornton
33,085	32,625	39,012	27,227	33,739	29,603	38,996	25,275	Wheeling
32,947	29,248	36,826	25,758	33,652	24,344	35,422	24,992	Worth
59%	40%	67%	32%	64%	35%	66%	30%	% of Suburban Vote
594,928	407,867	698,158	338,481	635,435	347,361	699,003	317,970	Suburban Totals*

Partisan Percentage of Vote for President

Suburban Cook County 1988-2016

Township	1988		1992		1996		2000	
	DEM	REP	DEM	REP	DEM	REP	DEM	REP
Barrington	21%	79%	26%	59%	29%	63%	29%	68%
Berwyn	42%	57%	46%	37%	54%	35%	58%	38%
Bloom	45%	54%	54%	33%	60%	32%	64%	34%
Bremen	46%	53%	53%	32%	60%	30%	64%	34%
Calumet	63%	36%	74%	18%	80%	14%	84%	14%
Cicero	36%	63%	49%	42%	55%	37%	61%	37%
Elk Grove	32%	68%	37%	46%	44%	47%	47%	50%
Evanston	67%	32%	68%	22%	73%	22%	75%	20%
Hanover	34%	65%	40%	41%	47%	43%	48%	49%
Lemont	37%	63%	36%	42%	41%	48%	39%	59%
Leyden	38%	61%	45%	40%	52%	37%	53%	44%
Lyons	38%	61%	41%	41%	47%	44%	48%	48%
Maine	37%	63%	42%	43%	48%	43%	50%	47%
New Trier	41%	58%	45%	43%	49%	47%	52%	46%
Niles	54%	45%	60%	31%	65%	29%	67%	31%
Northfield	36%	64%	43%	46%	48%	46%	52%	46%
Norwood Park	38%	61%	46%	42%	53%	39%	52%	45%
Oak Park	59%	40%	63%	25%	70%	25%	72%	23%
Orland	29%	71%	37%	48%	42%	49%	44%	54%
Palatine	27%	72%	33%	49%	39%	52%	41%	57%
Palos	32%	68%	36%	46%	42%	48%	44%	53%
Proviso	51%	48%	58%	31%	64%	29%	69%	29%
Rich	47%	53%	60%	32%	66%	28%	73%	25%
River Forest	33%	66%	39%	49%	44%	50%	47%	49%
Riverside	35%	64%	37%	46%	43%	48%	46%	49%
Schaumburg	32%	68%	39%	44%	47%	44%	48%	49%
Stickney	43%	56%	49%	33%	57%	30%	57%	40%
Thornton	49%	51%	62%	30%	68%	26%	75%	24%
Wheeling	33%	67%	40%	46%	46%	46%	48%	50%
Worth	35%	64%	42%	43%	48%	42%	51%	46%
Suburban Totals	392,190	561,080	456,337	405,328	460,535	328,255	510,688	369,612
% of Suburban Vote	41%	58%	44%	39%	54%	38%	56%	41%

Partisan Percentage of Vote for President—continued

2004		2008		2012		2016		Township
DEM	REP	DEM	REP	DEM	REP	DEM	REP	
33%	66%	43%	57%	36%	62%	45%	49%	Barrington
64%	35%	76%	24%	75%	23%	77%	18%	Berwyn
67%	32%	77%	23%	77%	22%	78%	19%	Bloom
63%	36%	72%	28%	69%	29%	65%	31%	Bremen
86%	14%	92%	8%	93%	6%	91%	6%	Calumet
65%	34%	80%	20%	81%	17%	84%	12%	Cicero
50%	49%	59%	41%	54%	44%	56%	39%	Elk Grove
82%	18%	88%	12%	84%	13%	88%	7%	Evanston
50%	49%	64%	36%	58%	39%	60%	35%	Hanover
39%	61%	44%	56%	37%	61%	37%	58%	Lemont
54%	46%	62%	38%	60%	38%	59%	37%	Leyden
52%	48%	59%	41%	53%	44%	57%	38%	Lyons
53%	46%	60%	40%	55%	43%	58%	37%	Maine
56%	43%	64%	36%	54%	44%	69%	25%	New Trier
64%	36%	68%	32%	65%	33%	69%	27%	Niles
52%	47%	60%	40%	52%	46%	63%	32%	Northfield
53%	46%	57%	43%	52%	46%	49%	46%	Norwood Park
78%	21%	85%	15%	82%	16%	86%	9%	Oak Park
43%	56%	49%	51%	43%	55%	44%	51%	Orland
45%	55%	55%	45%	49%	49%	54%	39%	Palatine
47%	52%	51%	49%	46%	52%	46%	49%	Palos
71%	28%	80%	20%	78%	20%	78%	18%	Proviso
77%	23%	86%	14%	86%	13%	87%	11%	Rich
55%	44%	66%	34%	60%	38%	70%	23%	River Forest
53%	46%	60%	40%	55%	42%	60%	33%	Riverside
52%	48%	63%	37%	58%	40%	59%	35%	Schaumburg
57%	42%	63%	37%	61%	37%	58%	38%	Stickney
79%	21%	87%	13%	88%	11%	87%	11%	Thornton
50%	49%	59%	41%	52%	46%	57%	37%	Wheeling
53%	47%	59%	41%	57%	41%	56%	39%	Worth
594,928	407,865	698,158	338,481	635,435	347,361	699,003	317,970	Suburban Totals
59%	40%	67%	32%	64%	35%	66%	30%	% of Suburban Vote

Schneider Takes Back 10th Congressional District

In the closely-watched 10th Congressional District contest, Democrat Brad Schneider – who formerly held the seat – defeated Republican incumbent Bruce Dold with 53.5 percent of the vote in suburban Cook and 52.3 percent of ballots cast in Lake County (where over three-fourths of the district’s voters reside).

10TH CONGRESSIONAL DISTRICT RESULTS						
	Cook County		Lake County		Total	
	Ballots Cast	% of Ballots Cast	Ballots Cast	% of Ballots Cast	Ballots Cast	% of Ballots Cast
Schneider (D)	36,180	53.5%	114,255	52.3%	150,435	52.6%
Dold (R)	31,443	46.5%	104,092	47.7%	135,535	47.4%

Both Dold and Schneider have won the 10th Congressional District twice since 2010 – neither able to win their re-election in the three contests between the two candidates. But in the most recent contest, Schneider was able to carry all four suburban Cook County townships within the district.

SUBURBAN COOK: 10TH CONGRESSIONAL DISTRICT RESULTS 2012-2016						
Township	2016		2014		2012	
	Dold	Schneider	Dold	Schneider	Dold	Schneider
	Ballots Cast (%)	Ballots Cast (%)	Ballots Cast (%)	Ballots Cast (%)	Ballots Cast (%)	Ballots Cast (%)
Maine	5,985 (40.6%)	8,770 (59.4%)	3,477 (44.5%)	4,338 (55.5%)	4,945 (40.5%)	7,274 (59.5%)
New Trier	2,302 (44.1%)	2,920 (55.9%)	1,836 (46.3%)	2,127 (53.7%)	2,285 (47.1%)	2,569 (52.9%)
Northfield	14,160 (49.0%)	14,745 (51.0%)	10,196 (51.8%)	9,497 (48.2%)	13,641 (52.2%)	12,505 (47.8%)
Wheeling	8,996 (48.0%)	9,745 (52.0%)	6,047 (53.0%)	5,353 (47.0%)	8,304 (50.8%)	8,047 (49.2%)
Suburban Cook	31,443 (46.5%)	36,180 (53.5%)	21,556 (50.3%)	21,315 (49.7%)	29,175 (49.0%)	30,395 (51.0%)

Busiest and Slowest Precincts on Election Day

Suburban Cook County

Precincts Ranked by Turnout Percentage

Lemont Precinct 12 at the Slovenian Cultural Center had the largest voter turnout percentage in suburban Cook County with 96.8 percent of registered voters casting ballots. Notably, Evanston had six precincts among those with highest turnout and Bloom had four among the lowest turnout. Bremen Precinct 37 had the lowest voter turnout with 49.1 percent.

TOP 10		BOTTOM 10	
Lemont-12	96.8%	Bremen-37	49.1%
Oak Park-24	89.0%	Bloom-29	50.3%
Evanston-6-2	88.7%	Bloom-35	50.9%
Evanston-3-3	88.6%	Thornton-112	51.7%
Evanston-3-7	88.2%	Bloom-46	51.9%
Evanston-6-3	87.8%	Bloom-21	52.5%
Oak Park-7	87.5%	Thornton-104	52.8%
Evanston-9-3	87.3%	Thornton-102	53.3%
Oak Park-31	87.2%	Worth-24	53.3%
Evanston-8-4	87.2%	Bremen-45	53.7%

Precincts Ranked by Ballots Cast

For a consecutive Presidential Election, Marya Yates School in Matteson (Rich Precinct 1) had the greatest number of voters cast ballots. In total, Rich Precinct 1 cast 2,146 ballots — the most ballots cast in all of Cook County. In fact, 116 more voters in that precinct participated than in 2012. Every top 10 precinct had more than 1,200 ballots – 1,786 more than the top 10 precincts in the 2012 Presidential Election.

TOP 10		BOTTOM 10	
Rich-1	2,146	Lyons-1	81
Hanover-27	2,052	Riverside-2	93
Northfield-51	1,740	Palos-22	113
Maine-30	1,523	Lyons-30	128
Bloom-38	1,404	Evanston-7-6	171
Evanston-2-1	1,400	Proviso-7	172
Rich-36	1,377	Proviso-46	185
Oak Park-31	1,290	Leyden-27	187
Niles-38	1,259	Bloom-21	208
Schaumburg-1	1,241	Bremen-19	218

Pre-Election Day Voting Breaks Records, Mail Ballot Voting Sees 139% Increase

Pre-Election Day voting in all its forms – early voting, mail voting, and grace period registration and voting – accounted for 42.5 percent of all ballots cast, an increase of 69.2 percent from the November 2012 Election. Early Voting had a significant increase with a total of 360,383 – a 57.6 percent increase from the 2012 Presidential Election. A major increase was also seen in Grace Period voting – from 8,212 ballots in November 2012 to 14,658 ballots this election.

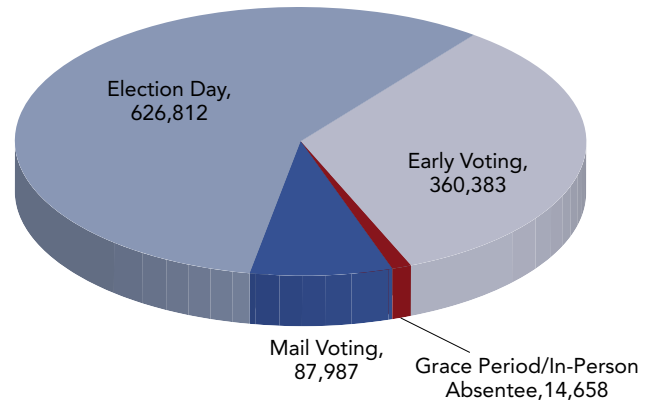
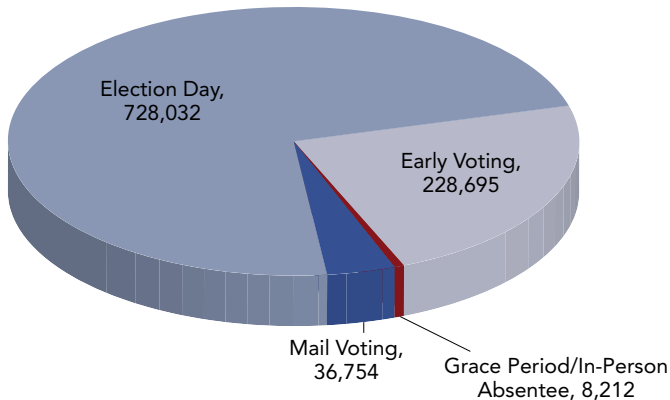
Mail Voting set records this election with more mail ballots cast – higher than any Presidential Election in suburban Cook County history. This election more than doubled the total number of mail ballots cast four years ago.

Suburban Cook: Pre-Election Ballots Cast

	2008 TOTAL	2012 TOTAL	2016 TOTAL	% CHANGE 2012-2016
Registered Voters	1,436,210	1,416,811	1,512,190	6.7%
Early Voting	226,084	228,695	360,383	57.6%
Grace Period Voting	4,197	8,212	14,658	78.5%
Mail Voting	27,727	36,754	87,987	139.4%
Pre-Election Ballots Cast	258,008	273,661	463,028	69.2%
Election Day Ballots Cast*	798,234	728,032	626,812*	-13.9%
Total Ballots Cast	1,056,242	1,001,693	1,089,840	8.8%
% Pre-Election Ballots	24.4%	27.3%	42.5%	55.7%

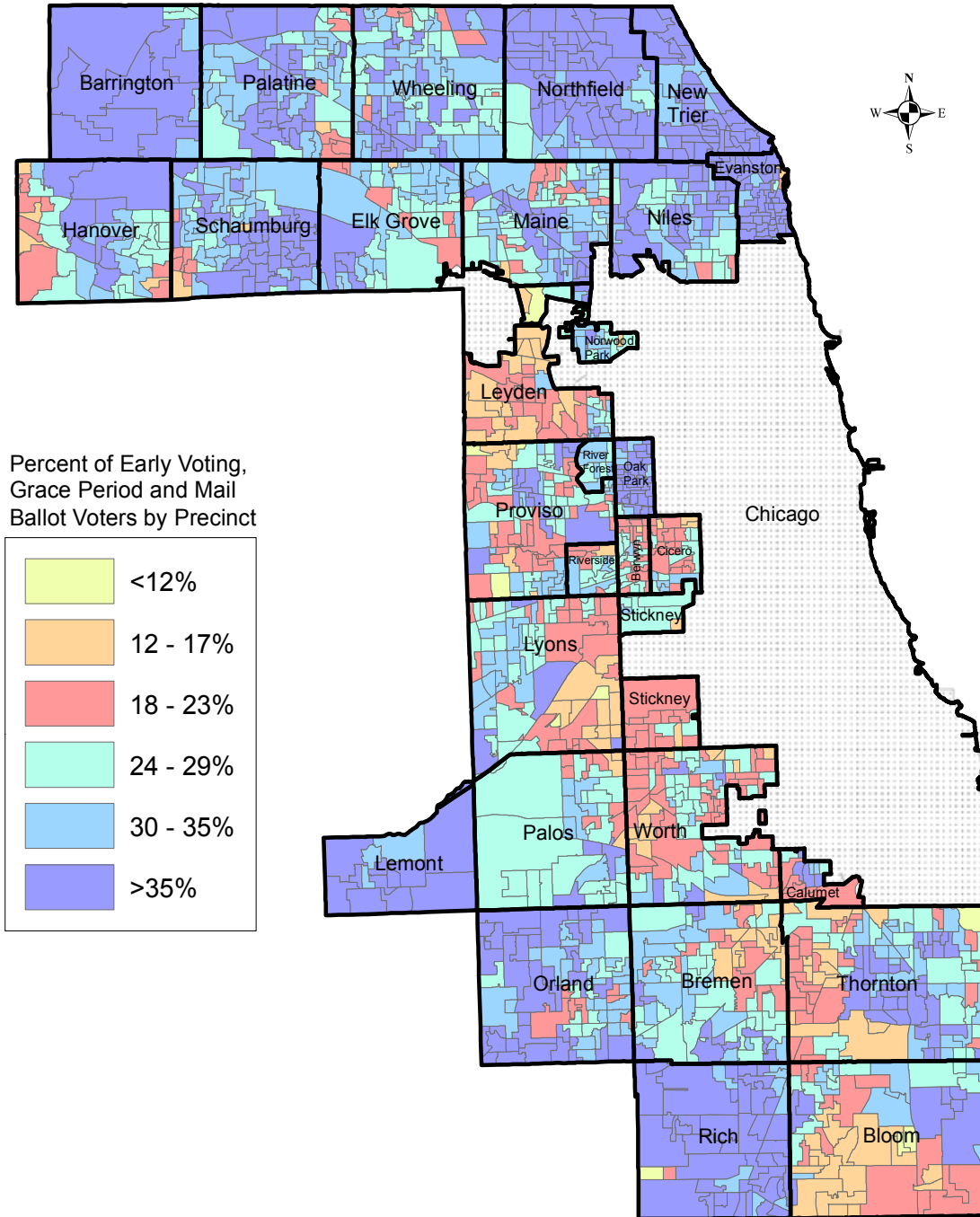
*Includes 24,266 Election Day Registration voters

Voting By Type: 2012 vs 2016



Total Pre-Election Ballots Cast Suburban Cook County

November 8, 2016 Presidential General Election



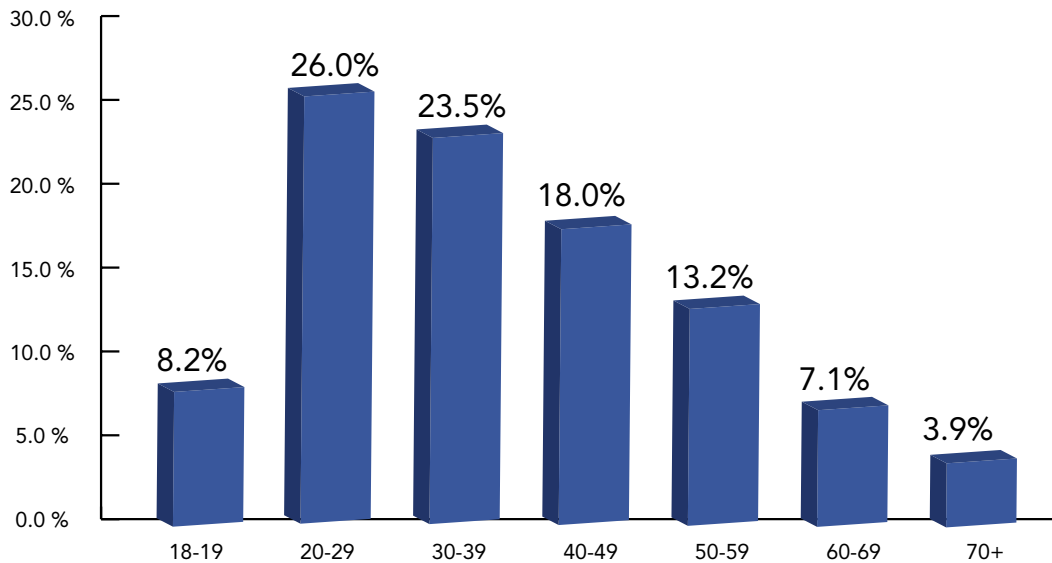
David Orr
cookcountyclerk.com

Map includes all Early, Grace Period and Mail Ballot voting.

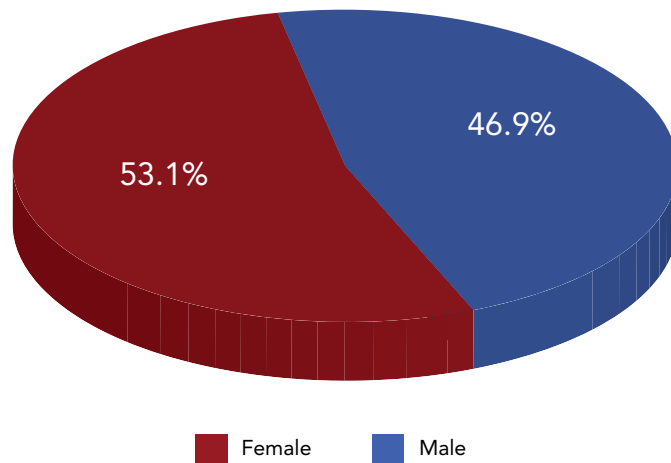
Election Day Registration Overwhelmingly Popular with Younger Voters

The November 8th Presidential Election was the first General Election that Election Day Registration (EDR) was available in every precinct. It proved to be very popular with voters, especially with voters in the 20 – 29 age group. Of the 24,266 voters who registered and voted on November 8th, 26 percent were between 20 and 29 years old. The majority of EDR voters were female – women made up 53.1 percent while men accounted for 46.9 percent of all EDR voters.

Total Election Day Registration by Age

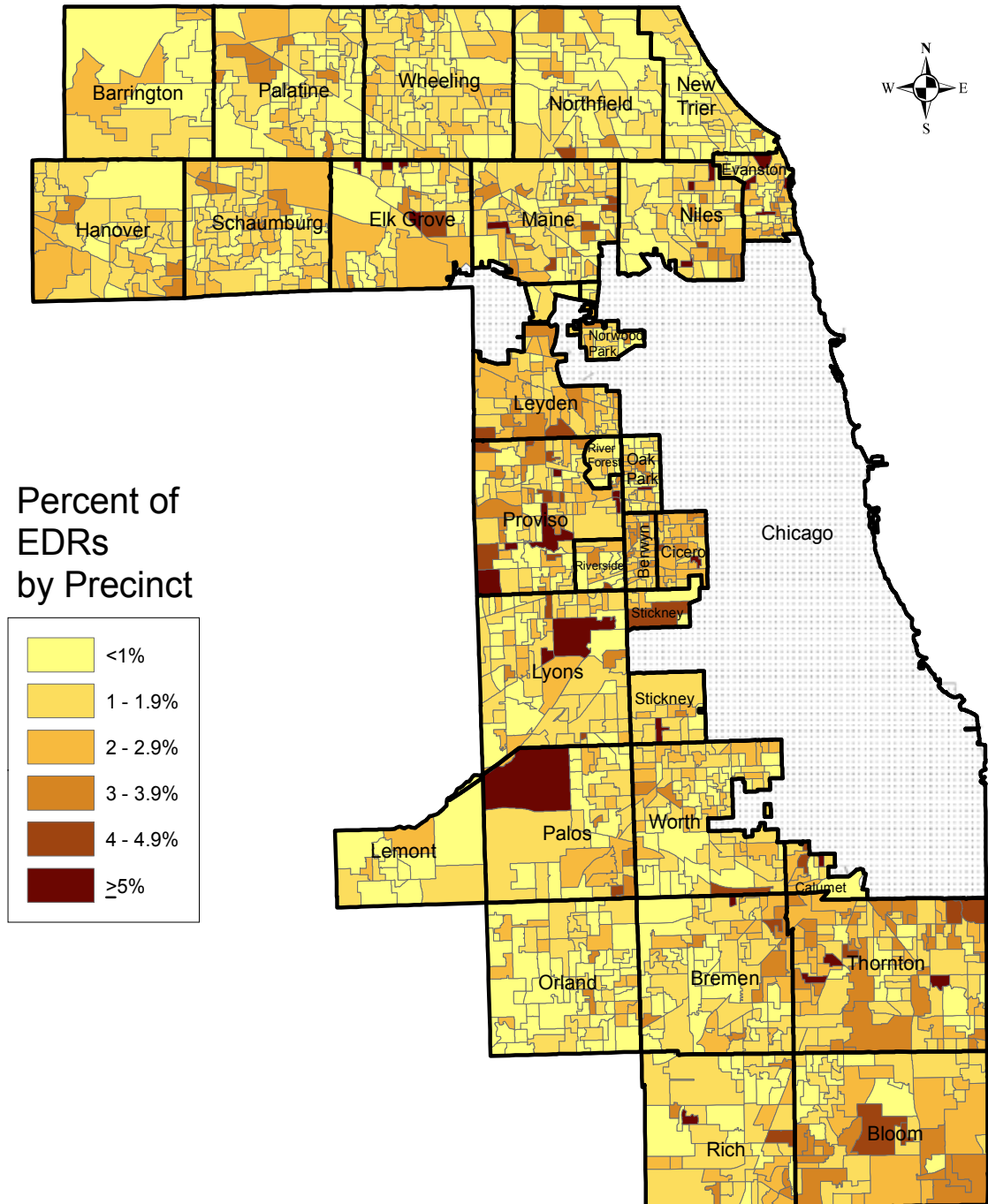


Total Election Day Registration by Gender



Election Day Registrations by Voters' Home Precincts Suburban Cook County

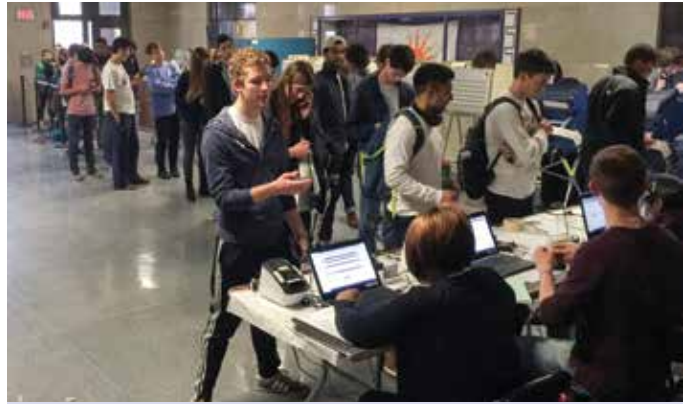
November 8, 2016 Presidential General Election



Election Day Registration was offered in all precincts as well as the Clerk's downtown office on Election Day. There were 24,266 EDR ballots cast on November 8, 2016.

Students Key to a Smooth Election Day

Suburban voters who cast a ballot on Election Day were likely served by a student poll worker. More high school and college students served during the 2016 Presidential Election than ever before in suburban Cook County. Working alongside community members of all ages, students in every township set aside time to participate in local democracy. The Clerk's office also collaborated with schools throughout the area to register students and encourage them to be active and engaged voters.



The Clerk's office registered 3,000 plus high school students to vote in preparation for both the 2016 Primary and General Election.

Statistics

- 1,255 High School students served in 907 polling places.
- 755 College Students served voters in 615 polling places on Election Day.
- With 2,010 students serving overall, nearly one in four members (23%) of the County Clerk's Election Day team were students.
- These students came from every community as 81 high schools and 62 colleges were represented on Election Day.



Northwestern University registered 96 percent of eligible incoming freshman to vote.



After coordinating with the Clerk's office, Trinity Christian College in Palos Heights established recurring voter registration events, a debate watch party, as well four voter education information sessions with their faculty on different election issues.



25 local elementary, middle and high schools requested assistance in coordinating mock elections.

Suburban Cook County Students Strengthening Democracy – By The Numbers:

- 76%** of high school judges said they are more likely to vote in the future after serving
- 92%** of high school judges said that serving voters was a valuable learning experience
- 73%** of college judges said they have a more favorable view of public service after serving
- 93%** of college judges surveyed said they would be willing to serve voters in the future

I Vote Because... Social Media Campaign

The Cook County Clerk's I Vote Because campaign began in June of 2016 in an effort to raise awareness of the importance of voter participation as well as showcase the similarities between the diverse population of Cook County.

As the elections administrator for suburban Cook County, the office sees the statistics and percentages that follow each election. We also wanted to know something else – what drives our voters to the polling place?

The I Vote Because campaign shows us that no matter who they vote for, Cook County's voters care deeply about their communities, each driven to the polls by personally significant and compelling reasons.



“Love is Love”



“My ancestors died for the right!”



“I care about wage equality”



“It's the only way to really get your voice heard”

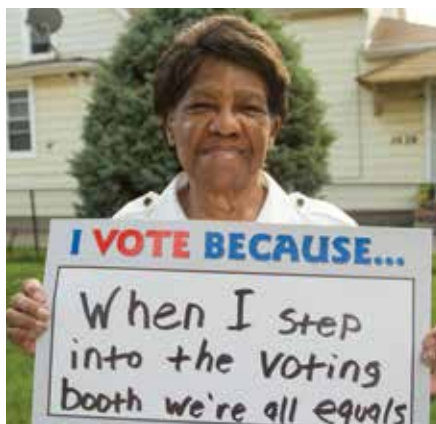
Campaign Statistics

Twitter

- 64,472 people viewed the Clerk's “I Vote Because” posts

Facebook

- 89,085 people viewed the Clerk's “I Vote Because” posts



“When I step into the voting booth we're all equals”



“I want to have a voice”

An Online Presence in the Presidential Election

For the first time in a presidential election, voters were able to register to vote and apply for a mail ballot online. The implementation of these new initiatives resulted in record-breaking numbers in almost every category.

Aside from a surge in numbers, the Clerk's online presence also helped Election Day run more efficiently. Online registration, mail ballot applications and the Clerk's Voter Information Tool increased voter registration and turnout while decreasing lines by allowing eligible residents to register to vote and find their polling place from the comfort of their own home.

Election Day Online Usage

Online Voter Registration

- Nearly 63,000 eligible suburban Cook County residents registered to vote online in the 90 days leading up to the November 2016 Presidential Election.

Online Mail Ballots

- 48 percent of the nearly 108,000 Mail Ballot Applications were requested online.

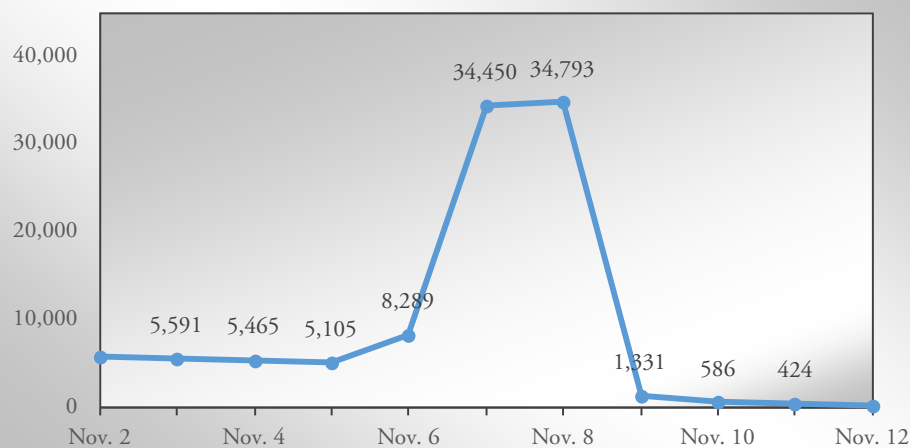
Election Day Social Media vs. Average Social Media

- 68,636 people viewed the Clerk's Twitter page — a 1,929% increase from the average 3,382 daily views.
- 12,082 people viewed the Clerk's Facebook page — a 370% increase from the average 2,571 daily views.

Voter Information Tool

- Over 77,000 suburban Cook County residents used the Voter Information Tool from November 6-8.
- The Find Your Polling Place video was watched over 1,500 times from November 6-8.

Voter Information Tool Pageviews





Snapshots from Election Day



Suburban Cook County saw a 72% turnout of its 1,512,190 registered voters this election. There were 1,089,840 ballots cast – the most votes cast in a Presidential Election since the 1980's. The November 8 Election broke the previous record set in 1992 by over 27,000 votes.



Our Election Day call center technician Dave Dalton provides helpful information to assist his fellow hotline workers. The Call Center answered more than 4,200 calls to ensure polling places were running smoothly.



In 2014, there were 41 South Asian poll workers who worked for Cook County Elections. Through community and media outreach and education 331 judges worked in the November 8th Presidential General Election. About 42% were first time Election Judges. An additional 25 Hindi speaking High schools students were also placed.



The Cook County Clerk's office is committed to removing barriers to accessibility at all polling places in Suburban Cook County - making it easier to vote privately and independently.



General Election
Cook County and The City of Chicago
Tuesday, November 8, 2016
Combined Summary

	Cook County	City of Chicago	Combined Total
Ballots Cast	1,089,840	1,115,664	2,205,504

Transportation Amendment

	Cook County	City of Chicago	Combined Total	Percentage
Yes	727,392	671,647	1,399,039	78.67%
No	185,062	194,234	379,296	21.33%
	912,454	865,881	1,778,335	

President & Vice President, U.S.

	Cook County	City of Chicago	Combined Total	Percentage
Donald J. Trump & Michael R. Pence - REP	317,970	135,317	453,287	20.79%
Hillary R. Clinton & Timothy M. Kaine - DEM	699,003	912,943	1,611,946	73.93%
Gary Johnson & Bill Weld - LIB	34,234	24,444	58,678	2.69%
Jill Stein & Ajamu Baraka - GRN	14,845	17,639	32,484	1.49%
Write-In	12,770	11,179	23,949	1.10%
	1,078,822	1,101,522	2,180,344	

Senator, U.S.

	Cook County	City of Chicago	Combined Total	Percentage
Mark Steven Kirk - REP	354,104	175,677	529,781	24.84%
Tammy Duckworth - DEM	650,685	849,215	1,499,900	70.32%
Kenton McMillen - LIB	29,374	24,453	53,827	2.52%
Scott Summers - GRN	21,819	25,169	46,988	2.20%
Write-In	1,240	1,221	2,461	0.12%
	1,057,222	1,075,735	2,132,957	

Comptroller, State of Illinois 2yr

	Cook County	City of Chicago	Combined Total	Percentage
Leslie Geissler Munger - REP	406,437	200,815	607,252	29.05%
Susana Mendoza - DEM	569,681	779,678	1,349,359	64.54%
Claire Ball - LIB	33,880	35,837	69,717	3.33%
Tim Curtin - GRN	29,189	35,121	64,310	3.08%
	1,039,187	1,051,451	2,090,638	

U.S. Representative, 1st District

	Cook County	City of Chicago	Combined Total	Percentage
August (O'Neill) Deuser - REP	41,472	7,634	49,106	18.33%
Bobby L. Rush - DEM	48,905	169,060	217,965	81.34%
Write-In		886	886	0.33%
	<hr/> 90,377	<hr/> 177,580	<hr/> 267,957	

U.S. Representative, 2nd District

	Cook County	City of Chicago	Combined Total	Percentage
John F Morrow - REP	19,923	4,460	24,383	10.81%
Robin Kelly - DEM	133,357	67,891	201,248	89.19%
	<hr/> 153,280	<hr/> 72,351	<hr/> 225,631	

U.S. Representative, 3rd District

	Cook County	City of Chicago	Combined Total	Percentage
Daniel William Lipinski - DEM	123,197	71,358	194,555	97.66%
Write-In	3,055	1,600	4,655	2.34%
	<hr/> 126,252	<hr/> 72,958	<hr/> 199,210	

U.S. Representative, 4th District

	Cook County	City of Chicago	Combined Total	Percentage
Luis V. Gutierrez - DEM	45,209	126,088	171,297	100.00%
	<hr/> 45,209	<hr/> 126,088	<hr/> 171,297	

U.S. Representative, 5th District

	Cook County	City of Chicago	Combined Total	Percentage
Vince Kolber - REP	16,117	54,101	70,218	24.84%
Mike Quigley - DEM	25,753	172,726	198,479	70.21%
Rob Sherman - GRN	2,181	11,435	13,616	4.82%
Write-In	51	320	371	0.13%
	<hr/> 44,102	<hr/> 238,582	<hr/> 282,684	

U.S. Representative, 6th District

	Cook County	City of Chicago	Combined Total	Percentage
Peter J. Roskam - REP	26,762		26,762	59.95%
Amanda Howland - DEM	17,881		17,881	40.05%
	<hr/> 44,643		<hr/> 44,643	

U.S. Representative, 7th District

	Cook County	City of Chicago	Combined Total	Percentage
Jeffrey A. Leef - REP	13,794	33,088	46,882	15.70%
Danny K. Davis - DEM	62,197	188,387	250,584	83.93%
Write-In	221	861	1,082	0.36%
	<hr/> 76,212	<hr/> 222,336	<hr/> 298,548	

U.S. Representative, 8th District

	Cook County	City of Chicago	Combined Total	Percentage
Peter "Pete" DiCianni - REP	50,629		50,629	40.02%
Raja Krishnamoorthi - DEM	75,876		75,876	59.98%
	126,505		126,505	

U.S. Representative, 9th District

	Cook County	City of Chicago	Combined Total	Percentage
Joan McCarthy Lasonde - REP	87,658	21,892	109,550	33.42%
Janice D. Schakowsky - DEM	131,295	86,011	217,306	66.29%
Write-In	495	454	949	0.29%
	219,448	108,357	327,805	

U.S. Representative, 10th District

	Cook County	City of Chicago	Combined Total	Percentage
Robert Dold - REP	31,443		31,443	46.40%
Brad Schneider - DEM	36,180		36,180	53.39%
Write-In	148		148	0.22%
	67,771		67,771	

U.S. Representative, 11th District

	Cook County	City of Chicago	Combined Total	Percentage
Tonia Khouri - REP	1,471		1,471	62.41%
Bill Foster - DEM	886		886	37.59%
	2,357		2,357	

State Senator, 1st District

	Cook County	City of Chicago	Combined Total	Percentage
Antonio "Tony" Munoz - DEM	649	45,785	46,434	100.00%
	649	45,785	46,434	

State Senator, 2nd District

	Cook County	City of Chicago	Combined Total	Percentage
Omar Aquino - DEM	391	56,609	57,000	100.00%
	391	56,609	57,000	

State Senator, 4th District

	Cook County	City of Chicago	Combined Total	Percentage
Kimberly A. Lightford - DEM	59,326	21,257	80,583	100.00%
	59,326	21,257	80,583	

State Senator, 5th District

Patricia Van Pelt - DEM

Cook County	City of Chicago	Combined Total	Percentage
	75,700	75,700	100.00%
	75,700	75,700	

State Senator, 7th District

Heather A. Steans - DEM

Cook County	City of Chicago	Combined Total	Percentage
1,383	80,631	82,014	100.00%
1,383	80,631	82,014	

State Senator, 8th District

Ira I. Silverstein - DEM

Cook County	City of Chicago	Combined Total	Percentage
31,763	30,386	62,149	100.00%
31,763	30,386	62,149	

State Senator, 10th District

John G. Mulroe - DEM

Write-In

Cook County	City of Chicago	Combined Total	Percentage
20,207	42,938	63,145	96.83%
637	1,433	2,070	3.17%
20,844	44,371	65,215	

State Senator, 11th District

Martin A. Sandoval - DEM

Cook County	City of Chicago	Combined Total	Percentage
10,766	38,866	49,632	100.00%
10,766	38,866	49,632	

State Senator, 13th District

Kwame Raoul - DEM

Cook County	City of Chicago	Combined Total	Percentage
	78,792	78,792	100.00%
	78,792	78,792	

State Senator, 14th District

Emil Jones III - DEM

Cook County	City of Chicago	Combined Total	Percentage
33,613	46,336	79,949	100.00%
33,613	46,336	79,949	

State Senator, 16th District

Jacqueline "Jacqui" Collins - DEM

Cook County	City of Chicago	Combined Total	Percentage
20,831	47,153	67,984	100.00%
20,831	47,153	67,984	

State Senator, 17th District

Donne E. Trotter - DEM

Cook County	City of Chicago	Combined Total	Percentage
26,829	46,212	73,041	100.00%
26,829	46,212	73,041	

State Senator, 19th District 4yr

Michael E. Hastings - DEM

Cook County	City of Chicago	Combined Total	Percentage
49,514		49,514	100.00%
49,514		49,514	

State Senator, 20th District

Iris Y. Martinez - DEM

Cook County	City of Chicago	Combined Total	Percentage
	60,418	60,418	100.00%
	60,418	60,418	

State Senator, 22nd District 4yr

Tracy Smodilla - REP

Cristina Castro - DEM

Cook County	City of Chicago	Combined Total	Percentage
15,682		15,682	37.68%
25,932		25,932	62.32%
41,614		41,614	

State Senator, 23rd District 2yr

Seth Lewis - REP

Thomas E. Cullerton - DEM

Cook County	City of Chicago	Combined Total	Percentage
1,904		1,904	54.98%
1,559		1,559	45.02%
3,463		3,463	

State Senator, 25th District 4yr

Jim Oberweis - REP

Corinne M. Pierog - DEM

Cook County	City of Chicago	Combined Total	Percentage
1,494		1,494	50.58%
1,460		1,460	49.42%
2,954		2,954	

State Senator, 26th District 2yr

Dan McConchie - REP

Kelly Mazeski - DEM

Cook County	City of Chicago	Combined Total	Percentage
5,137		5,137	62.28%
3,111		3,111	37.72%
8,248		8,248	

State Senator, 28th District

Mel Thillens - REP

Laura Murphy - DEM

Cook County	City of Chicago	Combined Total	Percentage
36,907	406	37,313	46.69%
41,930	673	42,603	53.31%
78,837	1,079	79,916	

State Senator, 29th District 2yr

Benjamin Salzberg - REP

Julie A. Morrison - DEM

Cook County	City of Chicago	Combined Total	Percentage
17,213		17,213	41.00%
24,775		24,775	59.00%
41,988		41,988	

State Senator, 40th District 4yr

Toi W. Hutchinson - DEM

Cook County	City of Chicago	Combined Total	Percentage
22,219		22,219	100.00%
22,219		22,219	

State Senator, 41st District 2yr

Christine Radogno - REP

Cook County	City of Chicago	Combined Total	Percentage
19,168		19,168	100.00%
19,168		19,168	

State Representative, 1st District

Daniel J. Burke - DEM

Cook County	City of Chicago	Combined Total	Percentage
613	20,996	21,609	100.00%
613	20,996	21,609	

State Representative, 2nd District

Theresa Mah - DEM

Cook County	City of Chicago	Combined Total	Percentage
	23,813	23,813	100.00%
	23,813	23,813	

State Representative, 3rd District

Luis Arroyo - DEM

Cook County	City of Chicago	Combined Total	Percentage
390	23,788	24,178	100.00%
390	23,788	24,178	

State Representative, 4th District

Cynthia Soto - DEM

Cook County	City of Chicago	Combined Total	Percentage
	34,077	34,077	100.00%
	34,077	34,077	

State Representative, 5th District

Juliana Stratton - DEM

Cook County	City of Chicago	Combined Total	Percentage
	40,747	40,747	100.00%
	40,747	40,747	

State Representative, 6th District

Sonya Marie Harper - DEM

Cook County	City of Chicago	Combined Total	Percentage
	32,904	32,904	100.00%
	32,904	32,904	

State Representative, 7th District

Emanuel "Chris" Welch - DEM

Cook County	City of Chicago	Combined Total	Percentage
39,914		39,914	100.00%
39,914		39,914	

State Representative, 8th District

La Shawn K. Ford - DEM

Cook County	City of Chicago	Combined Total	Percentage
16,606	21,887	38,493	100.00%
16,606	21,887	38,493	

State Representative, 9th District

Arthur Turner - DEM

Cook County	City of Chicago	Combined Total	Percentage
	36,765	36,765	100.00%
	36,765	36,765	

State Representative, 10th District

Mark Spognardi - REP

Melissa Conyyears - DEM

Cook County	City of Chicago	Combined Total	Percentage
	6,911	6,911	16.16%
	35,858	35,858	83.84%
	42,769	42,769	

State Representative, 11th District

Gary Mandell - REP

Ann M. Williams - DEM

Cook County	City of Chicago	Combined Total	Percentage
	15,115	15,115	28.44%
	38,028	38,028	71.56%
	53,143	53,143	

State Representative, 12th District

Gene Witt - REP

Sara Feigenholtz - DEM

Cook County	City of Chicago	Combined Total	Percentage
	14,161	14,161	24.41%
	43,858	43,858	75.59%
	58,019	58,019	

State Representative, 13th District

Gregory Harris - DEM

Cook County	City of Chicago	Combined Total	Percentage
	40,831	40,831	100.00%
	40,831	40,831	

State Representative, 14th District

	Cook County	City of Chicago	Combined Total	Percentage
Kelly M. Cassidy - DEM	1,271	34,718	35,989	83.22%
Arthur Noah Siegel - IND	211	7,048	7,259	16.78%
	<hr/> 1,482	<hr/> 41,766	<hr/> 43,248	

State Representative, 15th District

	Cook County	City of Chicago	Combined Total	Percentage
Jonathan Edelman - REP	8,959	7,071	16,030	38.52%
John C. D'Amico - DEM	12,152	13,434	25,586	61.48%
	<hr/> 21,111	<hr/> 20,505	<hr/> 41,616	

State Representative, 16th District

	Cook County	City of Chicago	Combined Total	Percentage
Lou Lang - DEM	16,246	13,473	29,719	100.00%
	<hr/> 16,246	<hr/> 13,473	<hr/> 29,719	

State Representative, 17th District

	Cook County	City of Chicago	Combined Total	Percentage
Laura Fine - DEM	42,198		42,198	100.00%
	<hr/> 42,198		<hr/> 42,198	

State Representative, 18th District

	Cook County	City of Chicago	Combined Total	Percentage
Jessica Tucker - REP	20,580		20,580	35.87%
Robyn Gabel - DEM	36,794		36,794	64.13%
	<hr/> 57,374		<hr/> 57,374	

State Representative, 19th District

	Cook County	City of Chicago	Combined Total	Percentage
Robert Martwick - DEM	3,688	26,849	30,537	100.00%
	<hr/> 3,688	<hr/> 26,849	<hr/> 30,537	

State Representative, 20th District

	Cook County	City of Chicago	Combined Total	Percentage
Michael P. McAuliffe - REP	13,236	12,503	25,739	56.10%
Merry Marwig - DEM	11,304	8,838	20,142	43.90%
	<hr/> 24,540	<hr/> 21,341	<hr/> 45,881	

State Representative, 21st District

	Cook County	City of Chicago	Combined Total	Percentage
Silvana Tabares - DEM	9,543	10,827	20,370	100.00%
	<hr/> 9,543	<hr/> 10,827	<hr/> 20,370	

State Representative, 22nd District

Michael J. Madigan - DEM

Cook County	City of Chicago	Combined Total	Percentage
1,009	26,706	27,715	100.00%
1,009	26,706	27,715	

State Representative, 23rd District

Michael J. Zalewski - DEM

Cook County	City of Chicago	Combined Total	Percentage
25,095	2	25,097	100.00%
25,095	2	25,097	

State Representative, 24th District

Andy Kirchoff - REP

Elizabeth "Lisa" Hernandez - DEM

Cook County	City of Chicago	Combined Total	Percentage
5,653	316	5,969	20.55%
18,316	4,763	23,079	79.45%
23,969	5,079	29,048	

State Representative, 25th District

Barbara Flynn Currie - DEM

Cook County	City of Chicago	Combined Total	Percentage
	37,937	37,937	100.00%
	37,937	37,937	

State Representative, 26th District

Christian L. Mitchell - DEM

Cook County	City of Chicago	Combined Total	Percentage
	40,251	40,251	100.00%
	40,251	40,251	

State Representative, 27th District

Monique D. Davis - DEM

Cook County	City of Chicago	Combined Total	Percentage
13,344	29,214	42,558	100.00%
13,344	29,214	42,558	

State Representative, 28th District

Robert "Bob" Rita - DEM

Cook County	City of Chicago	Combined Total	Percentage
21,065	16,125	37,190	100.00%
21,065	16,125	37,190	

State Representative, 29th District

Thaddeus Jones - DEM

Cook County	City of Chicago	Combined Total	Percentage
30,492	4,617	35,109	100.00%
30,492	4,617	35,109	

State Representative, 30th District

William "Will" Davis - DEM

Cook County	City of Chicago	Combined Total	Percentage
34,641		34,641	100.00%
34,641		34,641	

State Representative, 31st District

Mary E. Flowers - DEM

Cook County	City of Chicago	Combined Total	Percentage
12,690	24,214	36,904	100.00%
12,690	24,214	36,904	

State Representative, 32nd District

André Thapedi - DEM

Cook County	City of Chicago	Combined Total	Percentage
7,454	21,664	29,118	100.00%
7,454	21,664	29,118	

State Representative, 33rd District

Marcus C. Evans, Jr. - DEM

Cook County	City of Chicago	Combined Total	Percentage
15,878	24,168	40,046	100.00%
15,878	24,168	40,046	

State Representative, 34th District

Elgie R. Sims, Jr. - DEM

Cook County	City of Chicago	Combined Total	Percentage
10,224	19,980	30,204	100.00%
10,224	19,980	30,204	

State Representative, 35th District

Victor Horne - REP

Frances Ann Hurley - DEM

Cook County	City of Chicago	Combined Total	Percentage
13,421	4,660	18,081	34.38%
14,646	19,860	34,506	65.62%
28,067	24,520	52,587	

State Representative, 36th District

Kelly M. Burke - DEM

Cook County	City of Chicago	Combined Total	Percentage
32,650	5,397	38,047	100.00%
32,650	5,397	38,047	

State Representative, 37th District

Margo McDermed - REP

Cook County	City of Chicago	Combined Total	Percentage
10,263		10,263	100.00%
10,263		10,263	

State Representative, 38th District

Al Riley - DEM

Cook County	City of Chicago	Combined Total	Percentage
39,377		39,377	100.00%
39,377		39,377	

State Representative, 39th District

Will Guzzardi - DEM

Cook County	City of Chicago	Combined Total	Percentage
	29,170	29,170	100.00%
	29,170	29,170	

State Representative, 40th District

Jaime M. Andrade, Jr. - DEM

Cook County	City of Chicago	Combined Total	Percentage
	29,845	29,845	100.00%
	29,845	29,845	

State Representative, 43rd District

Anna Moeller - DEM

Write-In

Cook County	City of Chicago	Combined Total	Percentage
5,270		5,270	97.16%
154		154	2.84%
5,424		5,424	

State Representative, 44th District

Katy Dolan Baumer - REP

Fred Crespo - DEM

Cook County	City of Chicago	Combined Total	Percentage
13,098		13,098	37.21%
22,102		22,102	62.79%
35,200		35,200	

State Representative, 45th District

Christine Jennifer Winger - REP

Cynthia Borbas - DEM

Cook County	City of Chicago	Combined Total	Percentage
1,770		1,770	51.57%
1,662		1,662	48.43%
3,432		3,432	

State Representative, 47th District

Patricia R. "Patti" Bellock - REP

Cook County	City of Chicago	Combined Total	Percentage
3,144		3,144	100.00%
3,144		3,144	

State Representative, 49th District

Mike Fortner - REP

Cook County	City of Chicago	Combined Total	Percentage
2,071		2,071	100.00%
2,071		2,071	

State Representative, 51st District

Nick Sauer - REP

Cook County	City of Chicago	Combined Total	Percentage
206		206	100.00%
206		206	

State Representative, 52nd District

David McSweeney - REP

Write-In

Cook County	City of Chicago	Combined Total	Percentage
6,431		6,431	97.40%
172		172	2.60%
6,603		6,603	

State Representative, 53rd District

David Harris - REP

Cook County	City of Chicago	Combined Total	Percentage
38,809		38,809	100.00%
38,809		38,809	

State Representative, 54th District

Tom Morrison - REP

Cook County	City of Chicago	Combined Total	Percentage
38,846		38,846	100.00%
38,846		38,846	

State Representative, 55th District

Dan Gott - REP

Martin J. Moylan - DEM

Cook County	City of Chicago	Combined Total	Percentage
17,433	378	17,811	40.92%
25,029	688	25,717	59.08%
42,462	1,066	43,528	

State Representative, 56th District

Jillian Rose Bernas - REP

Michelle Mussman - DEM

Cook County	City of Chicago	Combined Total	Percentage
16,149		16,149	44.39%
20,229		20,229	55.61%
36,378		36,378	

State Representative, 57th District

Elaine Nekritz - DEM

Cook County	City of Chicago	Combined Total	Percentage
27,661		27,661	100.00%
27,661		27,661	

State Representative, 58th District

Martin (Marty) Blumenthal - REP

Scott Drury - DEM

Cook County	City of Chicago	Combined Total	Percentage
1,747		1,747	39.04%
2,728		2,728	60.96%
4,475		4,475	

State Representative, 59th District

	Cook County	City of Chicago	Combined Total	Percentage
Dawn Abernathy - REP	1,624		1,624	34.72%
Carol Sente - DEM	3,053		3,053	65.28%
	4,677		4,677	

State Representative, 77th District

	Cook County	City of Chicago	Combined Total	Percentage
Anthony Airdo - REP	3,967		3,967	24.11%
Kathleen Willis - DEM	12,484		12,484	75.89%
	16,451		16,451	

State Representative, 78th District

	Cook County	City of Chicago	Combined Total	Percentage
Camille Lilly - DEM	29,465	11,768	41,233	100.00%
	29,465	11,768	41,233	

State Representative, 80th District

	Cook County	City of Chicago	Combined Total	Percentage
Anthony DeLuca - DEM	22,846		22,846	100.00%
	22,846		22,846	

State Representative, 82nd District

	Cook County	City of Chicago	Combined Total	Percentage
Jim Durkin - REP	19,074		19,074	100.00%
	19,074		19,074	

Commissioner, Water Reclamation Dist

(vote for 3)

	Cook County	City of Chicago	Combined Total	Percentage
Barbara McGowan - DEM	528,385	621,678	1,150,063	28.79%
Mariyana T. Spyropoulos - DEM	445,927	505,846	951,773	23.83%
Josina Morita - DEM	418,665	501,049	919,714	23.03%
Karen Roothaan - GRN	199,132	144,798	343,930	8.61%
George Milkowski - GRN	189,022	119,554	308,576	7.73%
Michael Smith - GRN	187,271	132,891	320,162	8.02%
	1,968,402	2,025,816	3,994,218	

Commissioner, Water Reclamation Dist 2yr

	Cook County	City of Chicago	Combined Total	Percentage
Herb Schumann - REP	326,078	156,199	482,277	25.33%
Martin J. Durkan - DEM	508,569	712,375	1,220,944	64.13%
Christopher Anthony - GRN	93,047	107,659	200,706	10.54%
	927,694	976,233	1,903,927	

State's Attorney, Cook County

	Cook County	City of Chicago	Combined Total	Percentage
Christopher E.K. Pfannkuche - REP	377,888	187,783	565,671	27.94%
Kim Foxx - DEM	626,545	832,542	1,459,087	72.06%
	1,004,433	1,020,325	2,024,758	

Clerk of the Circuit Court, Cook County

	Cook County	City of Chicago	Combined Total	Percentage
Diane S. Shapiro - REP	429,102	227,130	656,232	32.78%
Dorothy A. Brown - DEM	567,218	778,478	1,345,696	67.22%
	996,320	1,005,608	2,001,928	

Recorder of Deeds, Cook County

	Cook County	City of Chicago	Combined Total	Percentage
Karen A. Yarbrough - DEM	780,181	866,993	1,647,174	98.58%
Write-In	12,372	11,322	23,694	1.42%
	792,553	878,315	1,670,868	

Board of Review, 1st District

	Cook County	City of Chicago	Combined Total	Percentage
Dan Patlak - REP	339,539	14,166	353,705	51.89%
Marty Stack - DEM	314,141	13,857	327,998	48.11%
	653,680	28,023	681,703	

Board of Review, 2nd District

	Cook County	City of Chicago	Combined Total	Percentage
Michael Cabonargi - DEM	79,576	428,745	508,321	100.00%
	79,576	428,745	508,321	

Appellate Court Judge (Vac. of Epstein)

	Cook County	City of Chicago	Combined Total	Percentage
Eileen O'Neill Burke - DEM	742,537	820,696	1,563,233	100.00%
	742,537	820,696	1,563,233	

Appellate Court Judge (Vac. of Quinn)

	Cook County	City of Chicago	Combined Total	Percentage
Bertina E. Lampkin - DEM	714,842	792,849	1,507,691	100.00%
	714,842	792,849	1,507,691	

Circuit Court Judge (Vac. of Biebel, Jr.)

	Cook County	City of Chicago	Combined Total	Percentage
John Fitzgerald Lyke, Jr. - DEM	712,598	789,449	1,502,047	100.00%
	712,598	789,449	1,502,047	

Circuit Court Judge (Vac. of Elrod)

Rossana Patricia Fernandez - DEM

Cook County	City of Chicago	Combined Total	Percentage
706,900	780,540	1,487,440	100.00%
706,900	780,540	1,487,440	

Circuit Court Judge (Vac. of Hogan)

Alison C. Conlon - DEM

Cook County	City of Chicago	Combined Total	Percentage
698,514	764,021	1,462,535	100.00%
698,514	764,021	1,462,535	

Circuit Court Judge (Vac. of Howlett, Jr.)

Aleksandra "Alex" Gillespie - DEM

Cook County	City of Chicago	Combined Total	Percentage
693,979	756,805	1,450,784	100.00%
693,979	756,805	1,450,784	

Circuit Court Judge (Vac. of Johnson)

Carolyn J. Gallagher - DEM

Cook County	City of Chicago	Combined Total	Percentage
695,734	751,909	1,447,643	100.00%
695,734	751,909	1,447,643	

Circuit Court Judge (Vac. of Karnezis)

Mary Kathleen McHugh - DEM

Cook County	City of Chicago	Combined Total	Percentage
693,875	747,510	1,441,385	100.00%
693,875	747,510	1,441,385	

Circuit Court Judge (Vac. of Love)

Brendan A. O'Brien - DEM

Cook County	City of Chicago	Combined Total	Percentage
695,504	749,678	1,445,182	100.00%
695,504	749,678	1,445,182	

Circuit Court Judge (Vac. of O'Brien)

Maureen O'Donoghue Hannon - DEM

Cook County	City of Chicago	Combined Total	Percentage
687,834	749,220	1,437,054	100.00%
687,834	749,220	1,437,054	

Circuit Court Judge (Vac. of Palmer)

Susana L. Ortiz - DEM

Cook County	City of Chicago	Combined Total	Percentage
690,973	759,228	1,450,201	100.00%
690,973	759,228	1,450,201	

Circuit Court Judge (Vac. of Ruscitti Grussel)

Daniel Patrick Duffy - DEM

Cook County	City of Chicago	Combined Total	Percentage
683,766	744,615	1,428,381	100.00%
683,766	744,615	1,428,381	

Circuit Court Judge (Vac. of Walsh)

Patrick Joseph Powers - DEM

Cook County	City of Chicago	Combined Total	Percentage
675,824	744,554	1,420,378	100.00%
675,824	744,554	1,420,378	

Judge, 1st Subcircuit (Vac. of Brim)

Jesse Outlaw - DEM

Cook County	City of Chicago	Combined Total	Percentage
19,614	69,164	88,778	100.00%
19,614	69,164	88,778	

Judge, 1st Subcircuit (Vac. of Hopkins)

Rhonda Crawford - DEM

Write-In

Cook County	City of Chicago	Combined Total	Percentage
19,193	68,777	87,970	96.05%
1,066	2,549	3,615	3.95%
20,259	71,326	91,585	

Judge, 2nd Subcircuit (Vac. of Savage)

D. Renee Jackson - DEM

Cook County	City of Chicago	Combined Total	Percentage
53,355	42,734	96,089	100.00%
53,355	42,734	96,089	

Judge, 4th Subcircuit (Vac. of Kunkle)

Edward J. King - DEM

Cook County	City of Chicago	Combined Total	Percentage
90,463		90,463	100.00%
90,463		90,463	

Judge, 5th Subcircuit (Vac. of Eadie-Daniels)

Leonard Murray - DEM

Cook County	City of Chicago	Combined Total	Percentage
	68,906	68,906	100.00%
	68,906	68,906	

Judge, 5th Subcircuit (Vac. of Stuart)

Freddrenna M. Lyle - DEM

Cook County	City of Chicago	Combined Total	Percentage
	69,036	69,036	100.00%
	69,036	69,036	

Judge, 5th Subcircuit (Vac. of Williams)

Daryl Jones - DEM

Cook County	City of Chicago	Combined Total	Percentage
	69,260	69,260	100.00%
	69,260	69,260	

Judge, 6th Subcircuit (Vac. of Ponce de Leon)

Eulalia "Evie" De La Rosa - DEM

Cook County	City of Chicago	Combined Total	Percentage
	85,600	85,600	100.00%
	85,600	85,600	

Judge, 6th Subcircuit (Vac of Gonzalez Santiago)

Richard C. Cooke - DEM

Cook County	City of Chicago	Combined Total	Percentage
	83,409	83,409	100.00%
	83,409	83,409	

Judge, 6th Subcircuit (Additional Judgeship A)

Anna Loftus - DEM

Cook County	City of Chicago	Combined Total	Percentage
	83,094	83,094	100.00%
	83,094	83,094	

Judge, 7th Subcircuit (Vac. of Burrell)

Marianne Jackson - DEM

Cook County	City of Chicago	Combined Total	Percentage
21,910	62,229	84,139	100.00%
21,910	62,229	84,139	

Judge, 7th Subcircuit (Vac of Rivkin-Carothers)

Patricia "Pat" S. Spratt - DEM

Cook County	City of Chicago	Combined Total	Percentage
21,890	60,125	82,015	100.00%
21,890	60,125	82,015	

Judge, 9th Subcircuit (Vac. of Berman)

Jerry Esrig - DEM

Cook County	City of Chicago	Combined Total	Percentage
70,797	30,528	101,325	100.00%
70,797	30,528	101,325	

Judge, 10th Subcircuit (Vac. of Howard)

Eve Marie Reilly - DEM

Cook County	City of Chicago	Combined Total	Percentage
19,620	71,354	90,974	100.00%
19,620	71,354	90,974	

Judge, 11th Subcircuit (Vac. of Kelly)

Catherine Ann Schneider - DEM

Cook County	City of Chicago	Combined Total	Percentage
51,226	37,283	88,509	100.00%
51,226	37,283	88,509	

Judge, 11th Subcircuit (Vac. of Zwick)

William B. Sullivan - DEM

Cook County	City of Chicago	Combined Total	Percentage
51,811	37,286	89,097	100.00%
51,811	37,286	89,097	

Judge, 12th Subcircuit (Vac. of Kazmierski, Jr.)

Thomas William Flannigan - REP

Marguerite Anne Quinn - DEM

Cook County	City of Chicago	Combined Total	Percentage
65,791		65,791	47.72%
72,078		72,078	52.28%
137,869		137,869	

Judge, 12th Subcircuit (Vac. of Mathein)

James Leonard Allegretti - REP

Janet Cronin Mahoney - DEM

Cook County	City of Chicago	Combined Total	Percentage
74,348		74,348	53.48%
64,669		64,669	46.52%
139,017		139,017	

Judge, 12th Subcircuit (Vac. of Tristano)

David Studenroth - REP

Carrie Hamilton - DEM

Cook County	City of Chicago	Combined Total	Percentage
67,050		67,050	48.30%
71,759		71,759	51.70%
138,809		138,809	

Judge, 12th Subcircuit (Additional Judgeship A)

Steven A. Kozicki - REP

James Edward Hanlon, Jr. - DEM

Cook County	City of Chicago	Combined Total	Percentage
72,487		72,487	51.73%
67,626		67,626	48.27%
140,113		140,113	

Judge, 13th Subcircuit (Vac. of Fecarotta, Jr.)

Kevin Michael O'Donnell - REP

Ketki "Kay" Steffen - DEM

Cook County	City of Chicago	Combined Total	Percentage
67,113		67,113	50.62%
65,475		65,475	49.38%
132,588		132,588	

Judge, 14th Subcircuit (Vac. of Ruble Murphy)

Matthew Link - DEM

Cook County	City of Chicago	Combined Total	Percentage
12,533	41,951	54,484	100.00%
12,533	41,951	54,484	

Trustee, La Grange Highlands Sanitary District

(vote for 2)

Francis A. Jakubka

Philip C. Sirotzke

	Cook County	City of Chicago	Combined Total	Percentage
	1,768		1,768	55.53%
	1,416		1,416	44.47%
	3,184		3,184	

Trustee, South Lyons Township Sanitary District

Tom Clancy

	Cook County	City of Chicago	Combined Total	Percentage
	1,918		1,918	100.00%
	1,918		1,918	

Trustee, South Palos Township Sanitary District

John T. Walsh

	Cook County	City of Chicago	Combined Total	Percentage
	613		613	100.00%
	613		613	

Joy Virginia Cunningham

Yes

No

	Cook County	City of Chicago	Combined Total	Percentage
	597,336	563,715	1,161,051	78.84%
	175,493	136,048	311,541	21.16%
	772,829	699,763	1,472,592	

Sophia H. Hall

Yes

No

	Cook County	City of Chicago	Combined Total	Percentage
	593,107	562,459	1,155,566	78.95%
	180,567	127,497	308,064	21.05%
	773,674	689,956	1,463,630	

Irwin J. Solganick

Yes

No

	Cook County	City of Chicago	Combined Total	Percentage
	525,403	463,929	989,332	69.45%
	233,015	202,202	435,217	30.55%
	758,418	666,131	1,424,549	

Alexander Patrick White

Yes

No

	Cook County	City of Chicago	Combined Total	Percentage
	561,890	508,496	1,070,386	74.66%
	201,721	161,559	363,280	25.34%
	763,611	670,055	1,433,666	

Vincent Michael Gaughan

	Cook County	City of Chicago	Combined Total	Percentage
Yes	554,525	498,890	1,053,415	73.54%
No	207,724	171,341	379,065	26.46%
	762,249	670,231	1,432,480	

Robert W. Bertucci

	Cook County	City of Chicago	Combined Total	Percentage
Yes	565,597	499,263	1,064,860	73.79%
No	204,594	173,560	378,154	26.21%
	770,191	672,823	1,443,014	

Deborah Mary Dooling

	Cook County	City of Chicago	Combined Total	Percentage
Yes	569,640	520,337	1,089,977	76.67%
No	186,020	145,587	331,607	23.33%
	755,660	665,924	1,421,584	

Timothy C. Evans

	Cook County	City of Chicago	Combined Total	Percentage
Yes	575,819	548,949	1,124,768	76.87%
No	194,764	143,701	338,465	23.13%
	770,583	692,650	1,463,233	

Cheyrl D. Ingram

	Cook County	City of Chicago	Combined Total	Percentage
Yes	560,042	526,185	1,086,227	77.37%
No	178,386	139,406	317,792	22.63%
	738,428	665,591	1,404,019	

Raymond L. Jagielski

	Cook County	City of Chicago	Combined Total	Percentage
Yes	526,559	475,937	1,002,496	71.79%
No	210,391	183,587	393,978	28.21%
	736,950	659,524	1,396,474	

Bertina E. Lampkin

	Cook County	City of Chicago	Combined Total	Percentage
Yes	544,284	519,042	1,063,326	75.34%
No	195,328	152,707	348,035	24.66%
	739,612	671,749	1,411,361	

William Maki

	Cook County	City of Chicago	Combined Total	Percentage
Yes	524,705	478,234	1,002,939	72.25%
No	207,256	178,028	385,284	27.75%
	731,961	656,262	1,388,223	

Sharon Marie Sullivan

	Cook County	City of Chicago	Combined Total	Percentage
Yes	566,537	530,139	1,096,676	78.09%
No	173,382	134,347	307,729	21.91%
	739,919	664,486	1,404,405	

James Patrick McCarthy

	Cook County	City of Chicago	Combined Total	Percentage
Yes	552,718	506,500	1,059,218	75.54%
No	187,115	155,925	343,040	24.46%
	739,833	662,425	1,402,258	

Arnette R. Hubbard

	Cook County	City of Chicago	Combined Total	Percentage
Yes	541,859	521,246	1,063,105	76.05%
No	192,063	142,737	334,800	23.95%
	733,922	663,983	1,397,905	

Nicholas R. Ford

	Cook County	City of Chicago	Combined Total	Percentage
Yes	522,197	483,215	1,005,412	71.88%
No	213,846	179,512	393,358	28.12%
	736,043	662,727	1,398,770	

Charles Patrick Burns

	Cook County	City of Chicago	Combined Total	Percentage
Yes	536,781	495,222	1,032,003	74.41%
No	193,549	161,381	354,930	25.59%
	730,330	656,603	1,386,933	

Denise Kathleen Filan

	Cook County	City of Chicago	Combined Total	Percentage
Yes	542,138	505,744	1,047,882	75.81%
No	186,837	147,544	334,381	24.19%
	728,975	653,288	1,382,263	

John Patrick Kirby

	Cook County	City of Chicago	Combined Total	Percentage
Yes	538,682	497,371	1,036,053	74.85%
No	190,637	157,505	348,142	25.15%
	729,319	654,876	1,384,195	

Diane Joan Larsen

	Cook County	City of Chicago	Combined Total	Percentage
Yes	545,614	508,309	1,053,923	76.06%
No	183,917	147,761	331,678	23.94%
	729,531	656,070	1,385,601	

Daniel Joseph Lynch

	Cook County	City of Chicago	Combined Total	Percentage
Yes	505,337	457,256	962,593	69.28%
No	226,096	200,807	426,903	30.72%
	731,433	658,063	1,389,496	

Kathleen Mary Pantle

	Cook County	City of Chicago	Combined Total	Percentage
Yes	542,772	506,490	1,049,262	75.96%
No	184,973	147,136	332,109	24.04%
	727,745	653,626	1,381,371	

Kevin Michael Sheehan

	Cook County	City of Chicago	Combined Total	Percentage
Yes	541,007	496,435	1,037,442	74.69%
No	191,707	159,838	351,545	25.31%
	732,714	656,273	1,388,987	

John D. Turner, Jr.

	Cook County	City of Chicago	Combined Total	Percentage
Yes	531,073	502,224	1,033,297	74.93%
No	193,715	152,010	345,725	25.07%
	724,788	654,234	1,379,022	

LeRoy K. Martin, Jr.

	Cook County	City of Chicago	Combined Total	Percentage
Yes	534,926	520,409	1,055,335	75.91%
No	193,613	141,363	334,976	24.09%
	728,539	661,772	1,390,311	

Paula Marie Daleo

	Cook County	City of Chicago	Combined Total	Percentage
Yes	541,857	505,689	1,047,546	75.53%
No	189,005	150,373	339,378	24.47%
	730,862	656,062	1,386,924	

Laurence J. Dunford

	Cook County	City of Chicago	Combined Total	Percentage
Yes	515,548	473,829	989,377	72.25%
No	205,629	174,413	380,042	27.75%
	721,177	648,242	1,369,419	

Robert Balanoff

	Cook County	City of Chicago	Combined Total	Percentage
Yes	514,311	477,166	991,477	72.38%
No	206,226	172,169	378,395	27.62%
	720,537	649,335	1,369,872	

Jeanne R. Cleveland Bernstein

	Cook County	City of Chicago	Combined Total	Percentage
Yes	523,529	484,328	1,007,857	73.20%
No	201,724	167,295	369,019	26.80%
	725,253	651,623	1,376,876	

Kathleen Marie Burke

	Cook County	City of Chicago	Combined Total	Percentage
Yes	557,004	518,967	1,075,971	77.12%
No	177,991	141,288	319,279	22.88%
	734,995	660,255	1,395,250	

Kay Marie Hanlon

	Cook County	City of Chicago	Combined Total	Percentage
Yes	544,774	501,585	1,046,359	75.87%
No	182,785	150,014	332,799	24.13%
	727,559	651,599	1,379,158	

Thomas J. Kelley

	Cook County	City of Chicago	Combined Total	Percentage
Yes	545,161	501,717	1,046,878	76.03%
No	180,220	149,877	330,097	23.97%
	725,381	651,594	1,376,975	

Clare Elizabeth McWilliams

	Cook County	City of Chicago	Combined Total	Percentage
Yes	546,418	515,214	1,061,632	77.13%
No	177,472	137,245	314,717	22.87%
	723,890	652,459	1,376,349	

Mary Lane Mikva

	Cook County	City of Chicago	Combined Total	Percentage
Yes	537,907	503,948	1,041,855	75.40%
No	188,760	151,199	339,959	24.60%
	726,667	655,147	1,381,814	

Patrick T. Murphy

	Cook County	City of Chicago	Combined Total	Percentage
Yes	548,998	503,421	1,052,419	75.50%
No	185,450	156,154	341,604	24.50%
	734,448	659,575	1,394,023	

Timothy Patrick Murphy

	Cook County	City of Chicago	Combined Total	Percentage
Yes	544,994	501,127	1,046,121	75.14%
No	188,681	157,485	346,166	24.86%
	733,675	658,612	1,392,287	

Jim Ryan

	Cook County	City of Chicago	Combined Total	Percentage
Yes	539,084	488,545	1,027,629	74.12%
No	192,774	166,011	358,785	25.88%
	731,858	654,556	1,386,414	

Edward "Ed" Washington, II

	Cook County	City of Chicago	Combined Total	Percentage
Yes	518,136	500,133	1,018,269	74.23%
No	201,944	151,548	353,492	25.77%
	720,080	651,681	1,371,761	

Thaddeus L. Wilson

	Cook County	City of Chicago	Combined Total	Percentage
Yes	525,163	502,937	1,028,100	74.87%
No	195,494	149,627	345,121	25.13%
	720,657	652,564	1,373,221	

John C. Griffin

	Cook County	City of Chicago	Combined Total	Percentage
Yes	532,400	498,876	1,031,276	75.34%
No	187,874	149,701	337,575	24.66%
	720,274	648,577	1,368,851	

Daniel James Pierce

	Cook County	City of Chicago	Combined Total	Percentage
Yes	530,103	494,863	1,024,966	74.88%
No	190,144	153,650	343,794	25.12%
	720,247	648,513	1,368,760	

Allen F. Murphy

	Cook County	City of Chicago	Combined Total	Percentage
Yes	534,507	497,174	1,031,681	75.19%
No	187,488	152,892	340,380	24.81%
	721,995	650,066	1,372,061	

William H. Hooks

	Cook County	City of Chicago	Combined Total	Percentage
Yes	519,707	495,851	1,015,558	74.13%
No	198,562	155,848	354,410	25.87%
	718,269	651,699	1,369,968	

Thomas V. Lyons

	Cook County	City of Chicago	Combined Total	Percentage
Yes	527,761	493,777	1,021,538	74.73%
No	191,500	153,860	345,360	25.27%
	719,261	647,637	1,366,898	

Raymond W. Mitchell

	Cook County	City of Chicago	Combined Total	Percentage
Yes	531,337	501,766	1,033,103	75.54%
No	187,571	146,909	334,480	24.46%
	718,908	648,675	1,367,583	

Edward Harmening

	Cook County	City of Chicago	Combined Total	Percentage
Yes	513,525	478,846	992,371	72.80%
No	203,959	166,731	370,690	27.20%
	717,484	645,577	1,363,061	

Daniel Malone

	Cook County	City of Chicago	Combined Total	Percentage
Yes	532,974	492,349	1,025,323	74.78%
No	188,054	157,706	345,760	25.22%
	721,028	650,055	1,371,083	

Geary W. Kull

	Cook County	City of Chicago	Combined Total	Percentage
Yes	503,826	467,524	971,350	71.63%
No	209,857	174,823	384,680	28.37%
	713,683	642,347	1,356,030	

John P. Callahan, Jr.

	Cook County	City of Chicago	Combined Total	Percentage
Yes	531,303	489,682	1,020,985	74.62%
No	189,906	157,363	347,269	25.38%
	721,209	647,045	1,368,254	

Steven James Bernstein

	Cook County	City of Chicago	Combined Total	Percentage
Yes	517,875	481,692	999,567	73.28%
No	201,646	162,821	364,467	26.72%
	719,521	644,513	1,364,034	

Bonita Coleman

	Cook County	City of Chicago	Combined Total	Percentage
Yes	522,991	503,396	1,026,387	74.26%
No	201,850	153,959	355,809	25.74%
	724,841	657,355	1,382,196	

Ann Finley Collins

	Cook County	City of Chicago	Combined Total	Percentage
Yes	546,715	513,005	1,059,720	77.39%
No	175,095	134,509	309,604	22.61%
	721,810	647,514	1,369,324	

Daniel J. Gallagher

	Cook County	City of Chicago	Combined Total	Percentage
Yes	532,395	484,353	1,016,748	74.42%
No	189,226	160,170	349,396	25.58%
	721,621	644,523	1,366,144	

Sharon O. Johnson

	Cook County	City of Chicago	Combined Total	Percentage
Yes	544,267	514,933	1,059,200	77.14%
No	178,860	134,998	313,858	22.86%
	723,127	649,931	1,373,058	

Linzey D. Jones

	Cook County	City of Chicago	Combined Total	Percentage
Yes	527,377	506,310	1,033,687	76.45%
No	182,735	135,751	318,486	23.55%
	710,112	642,061	1,352,173	

Terry MacCarthy

	Cook County	City of Chicago	Combined Total	Percentage
Yes	534,538	496,601	1,031,139	75.84%
No	181,847	146,682	328,529	24.16%
	716,385	643,283	1,359,668	

Sandra G. Ramos

	Cook County	City of Chicago	Combined Total	Percentage
Yes	548,733	520,790	1,069,523	77.05%
No	179,288	139,281	318,569	22.95%
	728,021	660,071	1,388,092	

Susan Kennedy Sullivan

	Cook County	City of Chicago	Combined Total	Percentage
Yes	563,531	529,992	1,093,523	78.88%
No	164,138	128,581	292,719	21.12%
	727,669	658,573	1,386,242	

Clerk-Recorder Office

	Cook County	City of Chicago	Combined Total	Percentage
Yes	609,273	586,140	1,195,413	63.15%
No	338,475	358,952	697,427	36.85%
	947,748	945,092	1,892,840	

Earned Sick Time

	Cook County	City of Chicago	Combined Total	Percentage
Yes	816,065	902,340	1,718,405	85.53%
No	183,232	107,583	290,815	14.47%
	999,297	1,009,923	2,009,220	

Village of Barrington, Construct Underpass

	Cook County	City of Chicago	Combined Total	Percentage
YES	1,568		1,568	51.89%
NO	1,454		1,454	48.11%
	3,022		3,022	

Village of Broadview, Term Limits

	Cook County	City of Chicago	Combined Total	Percentage
YES	2,174		2,174	56.61%
NO	1,666		1,666	43.39%
	3,840		3,840	

Village of Brookfield, Issue Bonds

	Cook County	City of Chicago	Combined Total	Percentage
YES	4,391		4,391	47.34%
NO	4,885		4,885	52.66%
	9,276		9,276	

Village of Burr Ridge, Increase Limiting Rate

	Cook County	City of Chicago	Combined Total	Percentage
YES	985		985	42.13%
NO	1,353		1,353	57.87%
	2,338		2,338	

City of Calumet City, Tavern Hours

	Cook County	City of Chicago	Combined Total	Percentage
YES	8,804		8,804	62.62%
NO	5,255		5,255	37.38%
	14,059		14,059	

City of Calumet City, Pensions

	Cook County	City of Chicago	Combined Total	Percentage
YES	4,414		4,414	31.54%
NO	9,581		9,581	68.46%
	13,995		13,995	

City of Calumet City, Term Limits

	Cook County	City of Chicago	Combined Total	Percentage
YES	9,130		9,130	65.40%
NO	4,830		4,830	34.60%
	13,960		13,960	

Town of Cicero, Consolidate Park Districts	Cook County	City of Chicago	Combined Total	Percentage
YES	12,697		12,697	73.59%
NO	4,557		4,557	26.41%
	17,254		17,254	

Town of Cicero, Free Skate Night	Cook County	City of Chicago	Combined Total	Percentage
YES	16,401		16,401	92.39%
NO	1,351		1,351	7.61%
	17,752		17,752	

Town of Cicero, Consolidate Library	Cook County	City of Chicago	Combined Total	Percentage
YES	12,126		12,126	69.15%
NO	5,411		5,411	30.85%
	17,537		17,537	

Village of Crestwood, Term Limits	Cook County	City of Chicago	Combined Total	Percentage
YES	4,073		4,073	88.49%
NO	530		530	11.51%
	4,603		4,603	

City of Harvey, Term Limits	Cook County	City of Chicago	Combined Total	Percentage
YES	6,074		6,074	84.97%
NO	1,074		1,074	15.03%
	7,148		7,148	

Village of Maywood, Video Gaming Liquor Licenses	Cook County	City of Chicago	Combined Total	Percentage
YES	4,850		4,850	55.63%
NO	3,869		3,869	44.37%
	8,719		8,719	

Village of Merrionette Park, Part Time Fire Dept.	Cook County	City of Chicago	Combined Total	Percentage
YES	298		298	39.68%
NO	453		453	60.32%
	751		751	

Village of Merrionette Park, Full Time Fire Dept.	Cook County	City of Chicago	Combined Total	Percentage
YES	256		256	34.13%
NO	494		494	65.87%
	750		750	

Village of Merrionette Park, Dog Park	Cook County	City of Chicago	Combined Total	Percentage
YES	421		421	55.18%
NO	342		342	44.82%
	763		763	

Village of Olympia Fields, Sales Tax	Cook County	City of Chicago	Combined Total	Percentage
YES	1,697		1,697	58.60%
NO	1,199		1,199	41.40%
	2,896		2,896	

Village of Westchester, Increase Limiting Rate	Cook County	City of Chicago	Combined Total	Percentage
YES	3,282		3,282	39.82%
NO	4,961		4,961	60.18%
	8,243		8,243	

Village of Western Springs, Issue Bonds	Cook County	City of Chicago	Combined Total	Percentage
YES	4,624		4,624	62.33%
NO	2,794		2,794	37.67%
	7,418		7,418	

Village of Willow Springs, Red Light Cameras	Cook County	City of Chicago	Combined Total	Percentage
YES	454		454	15.25%
NO	2,524		2,524	84.75%
	2,978		2,978	

Village of Willow Springs, Speed Cameras	Cook County	City of Chicago	Combined Total	Percentage
YES	765		765	25.65%
NO	2,217		2,217	74.35%
	2,982		2,982	

Village of Willow Springs, Police Operations	Cook County	City of Chicago	Combined Total	Percentage
YES	1,098		1,098	36.98%
NO	1,871		1,871	63.02%
	2,969		2,969	

Berwyn Township, Fossil Fuel	Cook County	City of Chicago	Combined Total	Percentage
YES	13,713		13,713	79.12%
NO	3,619		3,619	20.88%
	17,332		17,332	

Berwyn Township, Climate Change	Cook County	City of Chicago	Combined Total	Percentage
YES	15,421		15,421	87.74%
NO	2,155		2,155	12.26%
	17,576		17,576	

Oak Park Township, 2nd Amendment	Cook County	City of Chicago	Combined Total	Percentage
YES	18,752		18,752	64.34%
NO	10,394		10,394	35.66%
	29,146		29,146	

Orland Township, Transfer Territory	Cook County	City of Chicago	Combined Total	Percentage
YES	24,877		24,877	53.88%
NO	21,294		21,294	46.12%
	46,171		46,171	

Orland Township, Climate Change	Cook County	City of Chicago	Combined Total	Percentage
YES	34,274		34,274	73.67%
NO	12,252		12,252	26.33%
	46,526		46,526	

Proviso Township, Amend Constitution	Cook County	City of Chicago	Combined Total	Percentage
YES	41,203		41,203	71.18%
NO	16,685		16,685	28.82%
	57,888		57,888	

Proviso Township, Fossil Fuels	Cook County	City of Chicago	Combined Total	Percentage
YES	42,852		42,852	74.10%
NO	14,980		14,980	25.90%
	57,832		57,832	

Proviso Township, Climate Change	Cook County	City of Chicago	Combined Total	Percentage
YES	50,024		50,024	85.02%
NO	8,816		8,816	14.98%
	58,840		58,840	

Thornton Township, Mental Health	Cook County	City of Chicago	Combined Total	Percentage
YES	60,431		60,431	90.83%
NO	6,102		6,102	9.17%
	66,533		66,533	

Thornton Township, Youth Opportunities	Cook County	City of Chicago	Combined Total	Percentage
YES	62,169		62,169	93.40%
NO	4,393		4,393	6.60%
	66,562		66,562	

Thornton Township, Homeless Shelter	Cook County	City of Chicago	Combined Total	Percentage
YES	60,434		60,434	90.31%
NO	6,481		6,481	9.69%
	66,915		66,915	

Wheeling Township, Abolish Road District	Cook County	City of Chicago	Combined Total	Percentage
YES	41,390		41,390	68.77%
NO	18,799		18,799	31.23%
	60,189		60,189	

School District 15, Issue Bonds	Cook County	City of Chicago	Combined Total	Percentage
YES	14,273		14,273	29.68%
NO	33,809		33,809	70.32%
	48,082		48,082	

School District 26, Issue Bonds	Cook County	City of Chicago	Combined Total	Percentage
YES	2,203		2,203	33.90%
NO	4,296		4,296	66.10%
	6,499		6,499	

School District 57, Abolish Township Trustee	Cook County	City of Chicago	Combined Total	Percentage
YES	6,032		6,032	64.67%
NO	3,296		3,296	35.33%
	9,328		9,328	

School District 59, Abolish Township Trustee	Cook County	City of Chicago	Combined Total	Percentage
YES	10,240		10,240	53.19%
NO	9,010		9,010	46.81%
	19,250		19,250	

School District 73, Issue Bonds	Cook County	City of Chicago	Combined Total	Percentage
YES	1,183		1,183	64.75%
NO	644		644	35.25%
	1,827		1,827	

School District 80, Tax Extension	Cook County	City of Chicago	Combined Total	Percentage
YES	1,094		1,094	22.82%
NO	3,700		3,700	77.18%
	4,794		4,794	

School District 102, Increase Limiting Rate	Cook County	City of Chicago	Combined Total	Percentage
YES	6,541		6,541	50.59%
NO	6,388		6,388	49.41%
	12,929		12,929	

School District 118, Issue Bonds	Cook County	City of Chicago	Combined Total	Percentage
YES	6,672		6,672	56.15%
NO	5,211		5,211	43.85%
	11,883		11,883	

School District 181, Issue Bonds

	Cook County	City of Chicago	Combined Total	Percentage
YES	900		900	54.74%
NO	744		744	45.26%
	1,644		1,644	

High School District 200, Issue Bonds

	Cook County	City of Chicago	Combined Total	Percentage
YES	17,824		17,824	49.96%
NO	17,852		17,852	50.04%
	35,676		35,676	

Stronger IL Gun Laws

	Cook County	City of Chicago	Combined Total	Percentage
Yes		943,282	943,282	92.58%
No		75,603	75,603	7.42%
		1,018,885	1,018,885	

Fully Fund CPS

	Cook County	City of Chicago	Combined Total	Percentage
Yes		910,343	910,343	90.99%
No		90,129	90,129	9.01%
		1,000,472	1,000,472	

Infrastructure Projects

	Cook County	City of Chicago	Combined Total	Percentage
Yes		897,168	897,168	89.21%
No		108,558	108,558	10.79%
		1,005,726	1,005,726	

Mental Health Dist

	Cook County	City of Chicago	Combined Total	Percentage
Yes		37,824	37,824	86.59%
No		5,860	5,860	13.41%
		43,684	43,684	

Mental Health Dist Tax

	Cook County	City of Chicago	Combined Total	Percentage
Yes		33,511	33,511	77.96%
No		9,473	9,473	22.04%
		42,984	42,984	

Low-Cost Housing W01P01

	Cook County	City of Chicago	Combined Total	Percentage
Yes		379	379	73.31%
No		138	138	26.69%
		517	517	

More Charters W01P04

	Cook County	City of Chicago	Combined Total	Percentage
Yes		273	273	46.27%
No		317	317	53.73%
		590	590	

Low-Cost Housing W01P16

	Cook County	City of Chicago	Combined Total	Percentage
Yes		379	379	74.46%
No		130	130	25.54%
		509	509	

More Charters W01P17

	Cook County	City of Chicago	Combined Total	Percentage
Yes		185	185	40.13%
No		276	276	59.87%
		461	461	

Low-Cost Housing W01P19

	Cook County	City of Chicago	Combined Total	Percentage
Yes		535	535	80.09%
No		133	133	19.91%
		668	668	

More Charters W01P20

	Cook County	City of Chicago	Combined Total	Percentage
Yes		163	163	36.96%
No		278	278	63.04%
		441	441	

Low-Cost Housing W01P23

	Cook County	City of Chicago	Combined Total	Percentage
Yes		611	611	80.71%
No		146	146	19.29%
		757	757	

More Charters W01P23

	Cook County	City of Chicago	Combined Total	Percentage
Yes		269	269	36.65%
No		465	465	63.35%
		734	734	

More Charters W01P26

	Cook County	City of Chicago	Combined Total	Percentage
Yes		130	130	37.04%
No		221	221	62.96%
		351	351	

Low-Cost Housing W01P30

	Cook County	City of Chicago	Combined Total	Percentage
Yes		466	466	74.44%
No		160	160	25.56%
		626	626	

More Charters W01P30

	Cook County	City of Chicago	Combined Total	Percentage
Yes		246	246	39.68%
No		374	374	60.32%
		620	620	

More Charters W01P43

	Cook County	City of Chicago	Combined Total	Percentage
Yes		155	155	44.41%
No		194	194	55.59%
		349	349	

Keep Alcohol Ban W17P26

	Cook County	City of Chicago	Combined Total	Percentage
Yes		223	223	48.06%
No		241	241	51.94%
		464	464	

More Charters W25P07

	Cook County	City of Chicago	Combined Total	Percentage
Yes		159	159	36.30%
No		279	279	63.70%
		438	438	

More Charters W25P08

	Cook County	City of Chicago	Combined Total	Percentage
Yes		145	145	29.06%
No		354	354	70.94%
		499	499	

More Charters W25P09

	Cook County	City of Chicago	Combined Total	Percentage
Yes		165	165	34.88%
No		308	308	65.12%
		473	473	

More Charters W25P12

	Cook County	City of Chicago	Combined Total	Percentage
Yes		135	135	30.27%
No		311	311	69.73%
		446	446	

More Charters W25P13

	Cook County	City of Chicago	Combined Total	Percentage
Yes		137	137	28.60%
No		342	342	71.40%
		479	479	

More Charters W25P23

	Cook County	City of Chicago	Combined Total	Percentage
Yes		148	148	28.52%
No		371	371	71.48%
		519	519	

More Charters W25P24

	Cook County	City of Chicago	Combined Total	Percentage
Yes		165	165	35.18%
No		304	304	64.82%
		469	469	

More Charters W26P02

	Cook County	City of Chicago	Combined Total	Percentage
Yes		131	131	37.75%
No		216	216	62.25%
		347	347	

More Charters W26P05

	Cook County	City of Chicago	Combined Total	Percentage
Yes		127	127	37.24%
No		214	214	62.76%
		<hr/> 341	<hr/> 341	

More Charters W26P06

	Cook County	City of Chicago	Combined Total	Percentage
Yes		136	136	42.77%
No		182	182	57.23%
		<hr/> 318	<hr/> 318	

More Charters W26P11

	Cook County	City of Chicago	Combined Total	Percentage
Yes		147	147	44.01%
No		187	187	55.99%
		<hr/> 334	<hr/> 334	

More Charters W26P14

	Cook County	City of Chicago	Combined Total	Percentage
Yes		96	96	33.33%
No		192	192	66.67%
		<hr/> 288	<hr/> 288	

More Charters W26P21

	Cook County	City of Chicago	Combined Total	Percentage
Yes		184	184	39.57%
No		281	281	60.43%
		<hr/> 465	<hr/> 465	

More Charters W26P48

	Cook County	City of Chicago	Combined Total	Percentage
Yes		133	133	37.25%
No		224	224	62.75%
		<hr/> 357	<hr/> 357	

More Charters W33

	Cook County	City of Chicago	Combined Total	Percentage
Yes		6,558	6,558	39.82%
No		9,913	9,913	60.18%
		<hr/> 16,471	<hr/> 16,471	

Freeze Charters W46

	Cook County	City of Chicago	Combined Total	Percentage
Yes		2,055	2,055	55.71%
No		1,634	1,634	44.29%
		<hr/>	<hr/>	
		3,689	3,689	

Freeze Charters W49

	Cook County	City of Chicago	Combined Total	Percentage
Yes		11,342	11,342	62.59%
No		6,779	6,779	37.41%
		<hr/>	<hr/>	
		18,121	18,121	

CONT_NAME	CAND_NAME	TOTAL
President & Vice President, U.S.	JOANN BREIVOGEL	2
President & Vice President, U.S.	DARRELL CASTLE & SCOTT BRADLEY	112
President & Vice President, U.S.	DUFF COOPER SMITH	0
President & Vice President, U.S.	BEN HARTNELL	0
President & Vice President, U.S.	TOM HOEFLING	12
President & Vice President, U.S.	LAURENCE KOTLIKOFF & EDWARD LEAMER	15
President & Vice President, U.S.	JONATHAN LEE	1
President & Vice President, U.S.	JOSEPH A MALDONADO	2
President & Vice President, U.S.	KEVIN P MCKEE	15
President & Vice President, U.S.	EVAN MCMULLIN	1584
President & Vice President, U.S.	LAIO MORRIS	6
President & Vice President, U.S.	MATTHEW ROBERTS	0
President & Vice President, U.S.	MARSHALL R. SCHOENKE & JAMES C. MITCHELL, JR	1
President & Vice President, U.S.	PHILLIP SEEBERG	9
President & Vice President, U.S.	DAVID G STACK	2
President & Vice President, U.S.	JAMES T. STRUCK	0
President & Vice President, U.S.	ROY WAYNE TYREE	0
President & Vice President, U.S.	MARY A. VANN	0
Senator, U.S.	JIM BROWN	25
Senator, U.S.	SUSANA SANDOVAL	6
Senator, U.S.	ERIC KUFU JAMES STEWART	2
U.S. Representative, 3rd District	DIANE HARRIS	36
U.S. Representative, 5th District	MICHAEL "MJ" KRYNSKI	0
U.S. Representative, 9th District	SUSANNE ATANUS	9
U.S. Representative, 9th District	DAVID WILLIAMS	62
U.S. Representative, 10th District	JOSEPH WILLIAM KOPSICK	2
State Senator, 10th District 4yr	JONATHON LUERS	13
State Representative, 43rd District	RICHARD EVANS	10
State Representative, 52nd District	CHRIS BAUMAN	3
Recorder of Deeds, Cook County	PHIL COLLINS	83
Judge, 1st Subcircuit (Vac. of Hopkins)	MARYAM AHMAD	884

General Election
November 8, 2016
City of Chicago
Write-in Candidates

President of the United States	Counts
Roy Wayne Tyree	0
Cherunda Fox	0
Joseph A. Maldonado	3
Dr. Mary A. Vann	0
Laio Morris	0
Ben Hartnell	6
David G. Stack	1
Darrell Castle	37
Tom Hoefling	2
Duff Cooper Smith A.K.A “Coop Smith”	0
Evan McMullin	395
Jonathan Lee	0
Laurence Kotlikoff	15
Joann Breivogel	0
Demetra Jefferson Wysinger	0
United States Senator	
Susana Sandoval	20
Jim Brown	6
Eric Kufi James Stewart	3
United States Congress 1st District	
Tabitha Carson	8
United States Congress 3rd District	
Diane Harris	10
United States Congress 5th District	
Michael “MJ” Krynski	3

United States Congress 9th District

David Williams 17

Susanne Atanus 4

Illinois State Senate 10th District

Jonathan Luers 37

Cook County Recorder of Deeds

Phil Collins 57

Circuit Court Judge, 1st Sub Circuit Vanessa Hopkins Vacancy

Maryam Ahmad 1454

David Orr
Cook County Clerk

69 W. Washington, Fifth Floor
Chicago, IL 60602
312.603.0900
cookcountyclerk.com

