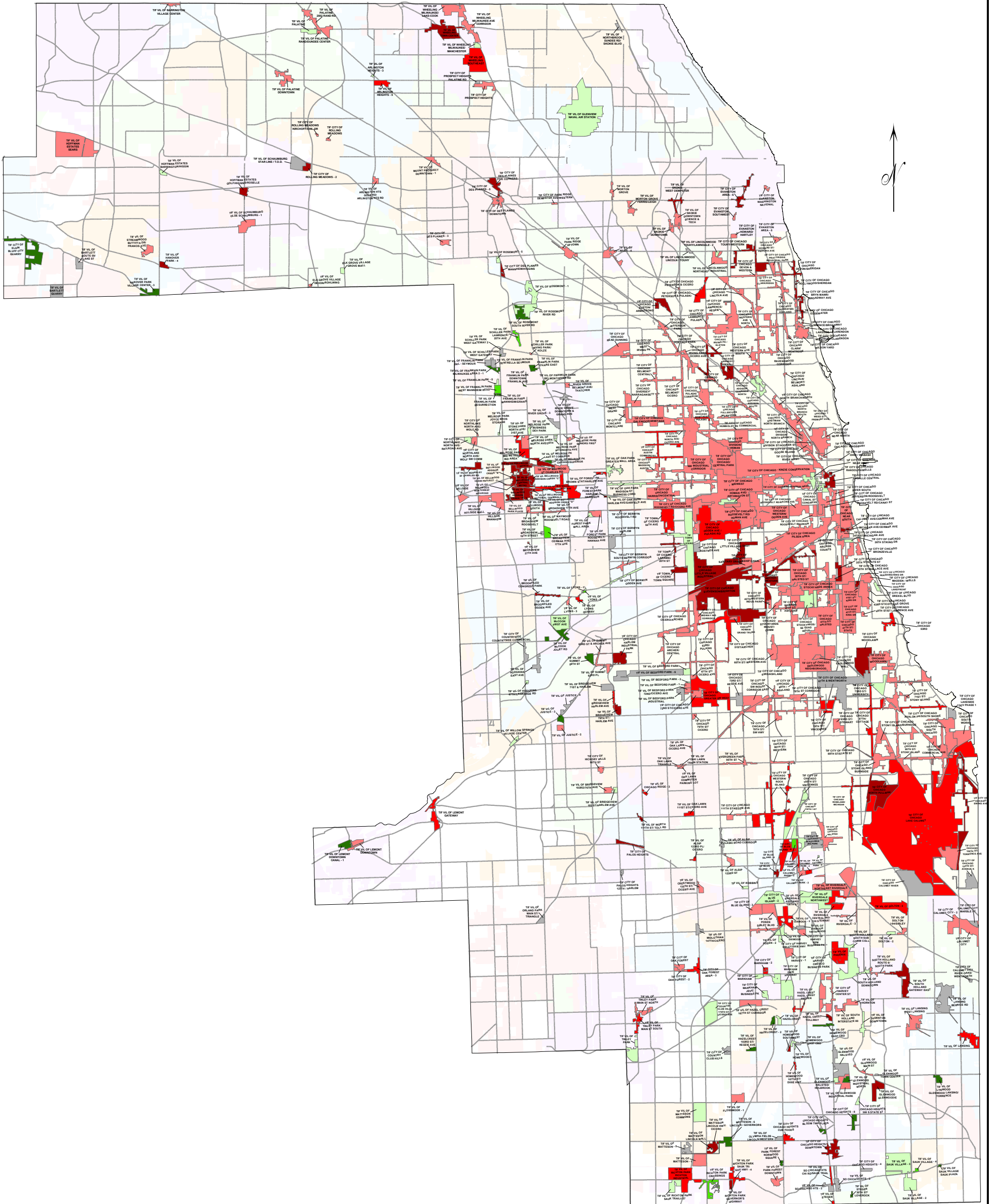
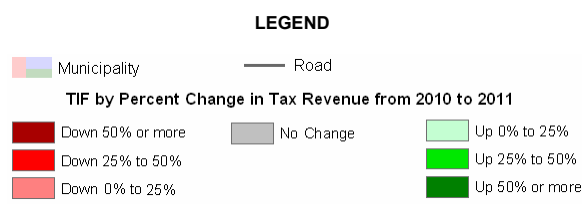
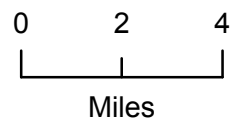


# Percent Change in Tax Revenue for Cook County Tax Increment Financing Districts From Tax Year 2010 to Tax Year 2011



**David Orr**  
Cook County Clerk



This Map represents tax year 2011 TIFs  
Former and future TIFs are not shown

This map was created using Cook County  
GIS Data by the Cook County Clerk Map Dept  
4th Floor 118 N Clark St. Chicago, IL 60602  
[www.cookcountyclerk.com](http://www.cookcountyclerk.com)

©2012 Cook County, Illinois; All Rights Reserved